

new  
product

**BCM 191**  
**BCM 311**  
**BCM 511**

### Installation example



Cool air outlet – possible installation

Depending on the needs, the cooled air can be driven from the top, side or down.



Down exit



Side exit



Top exit

- Powerful cooling method available in 19,000m<sup>3</sup>/h, 31,000m<sup>3</sup>/h, 50,000m<sup>3</sup>/h
- Control temperature and humidity
- Low running costs
- Easy to maintain
- Evaporative filter pads, blocking dirt
- Dust filter, blocking dust
- UV lamp, disinfecting the water
- Low energy consumption, 10% compared to traditional AC
- Fresh, cool and healthy air to guarantee cool and clean environment
- Full technical and commercial support available for dimensioning and project support

Specifications	Units	BCM 191	BCM 311	BCM 511
Cooling pad - total surface	dm <sup>3</sup>	201	306	420
Cooling pad size - 1 pc.	cm	75 x 67 x 10	87 x 88 x 10	100 x 105 x 10
Air flow	m <sup>3</sup> /h	19,000	31,000	50,000
Fan type		Axial	Axial	Axial
Fan speed		12	12	12
Power consumption	kW	1.1	3.0	4.0
Power supply	V/Hz	230/1ph/50	380/3ph/50-60	380/3ph/50-60
Air exit	mm	Top, side or down	Top, side or down	Top, side or down
Tank capacity	l	30	50	60
Water consumption	l/h	20-40	30-50	40-70
Remote control integration	SM 4.0	Yes	Yes	Yes
Product size (l x w x h)	mm	1100 x 1100 x 960	1280 x 1280 x 1170	1500 x 1500 x 1450
Weight	kg	55	86	112

## SELF-MANAGEMENT WATER CLEANING SYSTEM

Thanks to its electronic structure and components (electrovalve, drain valve and level sensors), Master equipment has an automated system for cleaning, emptying and filling water tank.

### PRE-COOL

The evaporative cooler enters into pre-cooling mode for one minute, just before the engine starts to operate, thus ensuring instant cooling capability.

### AUTO MODE

With the previous adjustment of the required values of temperature and humidity, this mode makes it possible to operate the equipment autonomously and efficiently by regulating air flow rate, and water levels according to the values (T° and %RH).

### AUTO-CLEAN

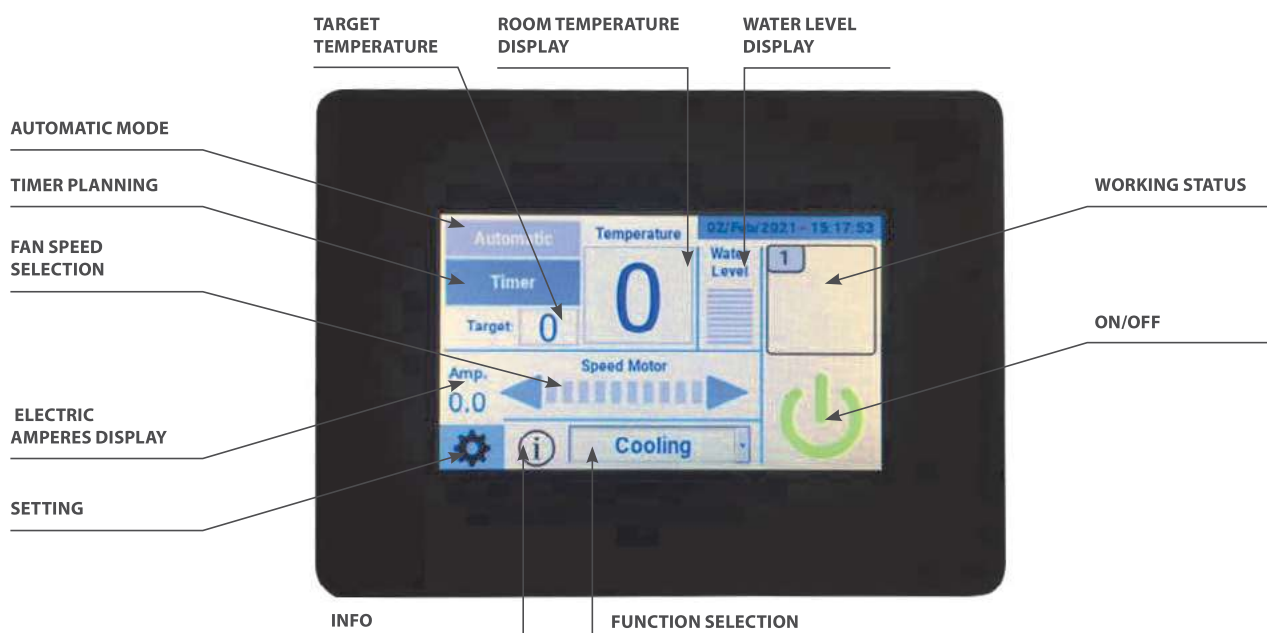
This function enables you to set a period of time (hrs.) for the automation of units cleaning. Programmable period of time from 0 to 72hrs. The water drain valve opens, empties the water tank and performs the cleaning process. After one minute, the inlet solenoid valve opens to refill the water tank. This self-cleaning mode is adjusted according to the measures and recommendations for prevention and control of Legionella.

## MAIN FEATURES OF SUPERMASTER DISPLAY AND CONTROLLER

### Available in two sizes:

\*SUPERMASTER 4: Controlling a single cooler. Available with a 4,3" display touch screen

\*SUPERMASTER 10: Controlling up to 31 coolers. Available with a 10" display touch screen

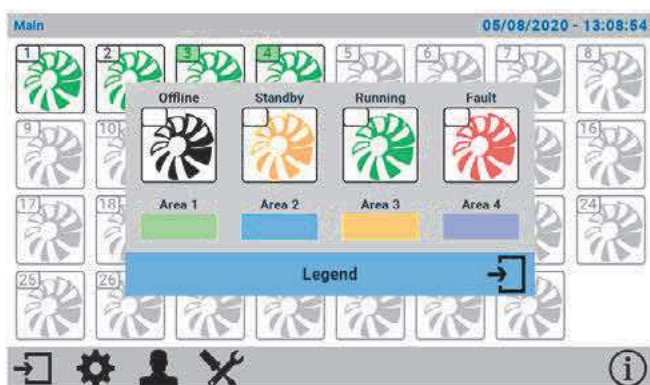


# REMOTE CONTROL SYSTEM FOR BCM STATIONARY AIR COOLERS SUPERMASTER

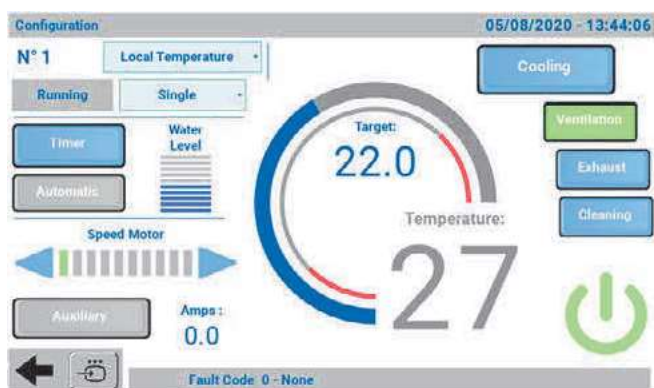


Start panel: protected by a password.

- The most advanced cooler controller on the market
- It can control up to 31 units of Master BCM
- Easy to use centralised control panel
- All of the cooler main functions can be set up via the Cloud on laptop or smartphone
- Very useful when coolers are difficult to reach or you need to control more than 1 unit



- It is possible to connect up to 31 units in one system.
- The application makes it possible to make the settings for each cooler separately or for groups of coolers.
- Cooler status is always indicated as either: off line, standby, running and fault.
- The coolers which are installed and active are checked with a white frame.
- They can be grouped in smaller zones with the same settings which allows for easy control
- Each zone is indicated by a different colour – easy to find to which zone a specific cooler belongs.



Possible actions:

- Setting a local and target humidity and temperature
- Checking the fault code - allows to easily control the failures during operation
- Checking the water tank level
- The Ampere box shows the instant current of the cooler. It is very useful for installation and for troubleshooting
- The settings can be made for one single cooler or for a group of coolers in the same area



The cooler panel also enables you to:

- Set a timer and a weekly planner
- Set the cooler functions: to cool, to ventilate, to exhaust, to swing, to clean
- Select fan speed motor and the air flow