

HR 6500



*std: standard

MATERIALS	
AISI 304	Stainless steel
AISI 316	Stainless steel AISI 316
CA	Cataphoric treatment steel
FE	Powder coating steel

QUANTITY FOR PALLET	2
BOX DIMENSIONS	90 x 70 x 70h cm / 35 x 27 x 27h in
MAX PALLET DIMENSIONS	60 x 120 x 160h cm / 24 x 47 x 63h in
WEIGHT WITHOUT BOX	47 Kg / 104 Lb
WEIGHT WITH BOX	50 Kg / 110 Lb
MAX PALLET WEIGHT	118 Kg / 260 Lb

CONFIGURATION	DIAMETER	MAX PRESSURE (bar / psi)	MATERIAL	MAX TEMPERATURE (°C / °F)	MAX HOSE LENGTH (m / ft)	STANDARD CODE
WATER	1/4"	0-250 / 0-3626 (*std)	AISI 304 (std*) 316 CA FE	90 / 194 140 / 284 discontinuous use	300 / 984	HR 6500
	1/4"				300 / 984	
	5/16"				250 / 820	
	3/8"				200 / 656	
	1/2" (std*)				150 / 492	

AV 8500



*std: standard

MATERIALS	
AISI 304	Stainless steel
AISI 316	Stainless steel AISI 316
CA	Cataphoric treatment steel
FE	Powder coating steel

QUANTITY FOR PALLET	2
BOX DIMENSIONS	70 x 90 x 80h cm / 27 x 35 x 31h in
MAX PALLET DIMENSIONS	80 x 120 x 180h cm / 31 x 47 x 71h in
WEIGHT WITHOUT BOX	38 Kg / 84 Lb
WEIGHT WITH BOX	40 Kg / 88 Lb
MAX PALLET WEIGHT	98 Kg / 216 Lb

CONFIGURATION	DIAMETER	MAX PRESSURE (bar / psi)	MATERIAL	MAX TEMPERATURE (°C / °F)	MAX HOSE LENGTH (m / ft)	STANDARD CODE
WATER	1/4"	0-250 / 0-3626	AISI 304 (std*) FE	140 / 284 discontinuous use	250 / 820	AV 8500
	5/16"				200 / 656	
	3/8"				170 / 558	
	1/2" (std*)				120 / 394	

HR 6501



*std: standard

MATERIALS	
AISI 304	Stainless steel
AISI 316	Stainless steel AISI 316
CA	Cataphoric treatment steel
FE	Powder coating steel

QUANTITY FOR PALLET	2
BOX DIMENSIONS	90 x 70 x 70h cm / 35 x 27 x 27h in
MAX PALLET DIMENSIONS	60 x 120 x 160h cm / 24 x 47 x 63h in
WEIGHT WITHOUT BOX	47 Kg / 104 Lb
WEIGHT WITH BOX	50 Kg / 110 Lb
MAX PALLET WEIGHT	118 Kg / 260 Lb

CONFIGURATION	DIAMETER	MAX PRESSURE (bar / psi)	MATERIAL	MAX TEMPERATURE (°C / °F)	MAX HOSE LENGTH (m / ft)	STANDARD CODE
WATER	3/4" (std*)	0-100 / 0-1450	AISI 304 (std*) FE	100 / 212	80 / 262	HR 6501
	1"				50 / 164	

AV 8501



*std: standard

MATERIALS	
AISI 304	Stainless steel
AISI 316	Stainless steel AISI 316
CA	Cataphoric treatment steel
FE	Powder coating steel

QUANTITY FOR PALLET	2
BOX DIMENSIONS	70 x 90 x 80h cm / 27 x 35 x 31h in
MAX PALLET DIMENSIONS	80 x 120 x 180h cm / 31 x 47 x 71h in
WEIGHT WITHOUT BOX	38 Kg / 84 Lb
WEIGHT WITH BOX	40 Kg / 88 Lb
MAX PALLET WEIGHT	98 Kg / 216 Lb

CONFIGURATION	DIAMETER	MAX PRESSURE (bar / psi)	MATERIAL	MAX TEMPERATURE (°C / °F)	MAX HOSE LENGTH (m / ft)	STANDARD CODE
WATER	3/4" (std*)	0-100 / 0-1450	AISI 304 (std*) FE	100 / 212	60 / 197	AV 8501
	1"				40 / 131	

CREATE YOUR OWN PRODUCT CODE WITH YOUR CHOSEN FEATURES

	FAMILY	SERIES	DIAMETER (except standard)	PRESSURE (specify only if 400 bar/5800 psi, 600 bar/8700 psi, 1000 bar/14500 psi)	MATERIAL (except standard AISI 304)	CONFIGURATION (specify the configuration code only when stated)	ACCESSORIES (only KIT BK and HD)	DESIGN	COLOR
CODE EXAMPLE	HR	6500			316			/	
WRITE YOUR OWN CODE	/

CODE EXAMPLE: HR 6500 316

YOUR PRODUCT CODE:

CREATE YOUR OWN PRODUCT CODE WITH YOUR CHOSEN FEATURES

	FAMILY	SERIES	DIAMETER (except standard)	PRESSURE (specify only if 400 bar/5800 psi, 600 bar/8700 psi, 1000 bar/14500 psi)	MATERIAL (except standard AISI 304)	CONFIGURATION (specify the configuration code only when stated)	ACCESSORIES (only KIT BK and HD)	DESIGN	COLOR
CODE EXAMPLE	AV	8500	3/8"		FE			/	
WRITE YOUR OWN CODE	/

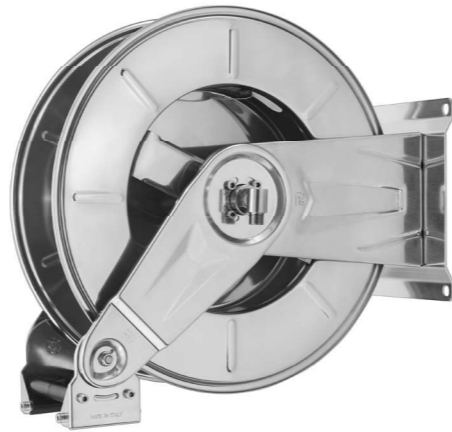
CODE EXAMPLE: AV 8500 3/8" FE

YOUR PRODUCT CODE:

HR EK 3500

with **REMOTE CONTROL**

E ELECTRIC **12** VOLT



*std: standard

MATERIALS	
AISI 304	Stainless steel
AISI 316	Stainless steel AISI 316
CA	Cataphoric treatment steel
FE	Powder coating steel

QUANTITY FOR PALLET	8
BOX DIMENSIONS	60 x 60 x 60h cm / 24 x 24 x 24 in
MAX PALLET DIMENSIONS	80 x 120 x 180h cm / 31 x 47 x 71h in
WEIGHT WITHOUT BOX	34 Kg / 75 Lb
WEIGHT WITH BOX	36 Kg / 79 Lb
MAX PALLET WEIGHT	306 Kg / 675 Lb

CONFIGURATION	DIAMETER	MAX PRESSURE (bar / psi)	MATERIAL	MAX TEMPERATURE (°C / °F)	MAX HOSE LENGTH (m / ft)	STANDARD CODE
WATER	1/4"	0-250 / 0-3626	AISI 304 (std*) FE	140 / 284 discontinuous use	90 / 295	HR EK 3500
	5/16"				65 / 213	
	3/8"				45 / 148	
	1/2" (std*)				35 / 115	

HR EK 3500 24

with **REMOTE CONTROL**

E ELECTRIC **24** VOLT



*std: standard

MATERIALS	
AISI 304	Stainless steel
AISI 316	Stainless steel AISI 316
CA	Cataphoric treatment steel
FE	Powder coating steel

QUANTITY FOR PALLET	8
BOX DIMENSIONS	60 x 60 x 60h cm / 24 x 24 x 24 in
MAX PALLET DIMENSIONS	80 x 120 x 180h cm / 31 x 47 x 71h in
WEIGHT WITHOUT BOX	34 Kg / 75 Lb
WEIGHT WITH BOX	36 Kg / 79 Lb
MAX PALLET WEIGHT	306 Kg / 675 Lb

CONFIGURATION	DIAMETER	MAX PRESSURE (bar / psi)	MATERIAL	MAX TEMPERATURE (°C / °F)	MAX HOSE LENGTH (m / ft)	STANDARD CODE
WATER	1/4"	0-250 / 0-3626	AISI 304 (std*) FE	140 / 284 discontinuous use	90 / 295	HR EK 3500 24
	5/16"				65 / 213	
	3/8"				45 / 148	
	1/2" (std*)				35 / 115	

HR EK 3500 S

without **REMOTE CONTROL**

E ELECTRIC **12** VOLT



*std: standard

MATERIALS	
AISI 304	Stainless steel
AISI 316	Stainless steel AISI 316
CA	Cataphoric treatment steel
FE	Powder coating steel

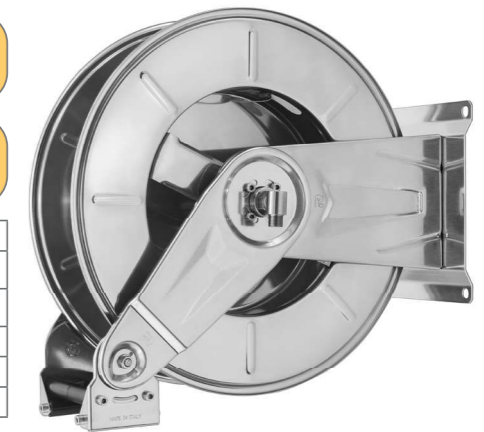
QUANTITY FOR PALLET	8
BOX DIMENSIONS	60 x 60 x 60h cm / 24 x 24 x 24 in
MAX PALLET DIMENSIONS	80 x 120 x 180h cm / 31 x 47 x 71h in
WEIGHT WITHOUT BOX	34 Kg / 75 Lb
WEIGHT WITH BOX	36 Kg / 79 Lb
MAX PALLET WEIGHT	306 Kg / 675 Lb

CONFIGURATION	DIAMETER	MAX PRESSURE (bar / psi)	MATERIAL	MAX TEMPERATURE (°C / °F)	MAX HOSE LENGTH (m / ft)	STANDARD CODE
WATER	1/4"	0-250 / 0-3626	AISI 304 (std*) FE	140 / 284 discontinuous use	90 / 295	HR EK 3500 S
	5/16"				65 / 213	
	3/8"				45 / 148	
	1/2" (std*)				35 / 115	

HR EK 3500 S 24

without **REMOTE CONTROL**

E ELECTRIC **24** VOLT



*std: standard

MATERIALS	
AISI 304	Stainless steel
AISI 316	Stainless steel AISI 316
CA	Cataphoric treatment steel
FE	Powder coating steel

QUANTITY FOR PALLET	8
BOX DIMENSIONS	60 x 60 x 60h cm / 24 x 24 x 24 in
MAX PALLET DIMENSIONS	80 x 120 x 180h cm / 31 x 47 x 71h in
WEIGHT WITHOUT BOX	34 Kg / 75 Lb
WEIGHT WITH BOX	36 Kg / 79 Lb
MAX PALLET WEIGHT	306 Kg / 675 Lb

CONFIGURATION	DIAMETER	MAX PRESSURE (bar / psi)	MATERIAL	MAX TEMPERATURE (°C / °F)	MAX HOSE LENGTH (m / ft)	STANDARD CODE
WATER	1/4"	0-250 / 0-3626	AISI 304 (std*) FE	140 / 284 discontinuous use	90 / 295	HR EK 3500 S 24
	5/16"				65 / 213	
	3/8"				45 / 148	
	1/2" (std*)				35 / 115	

CREATE YOUR OWN PRODUCT CODE WITH YOUR CHOSEN FEATURES

	FAMILY	SERIES	DIAMETER (except standard)	PRESSURE (specify only if 400 bar/5800 psi, 600 bar/8700 psi, 1000 bar/14500 psi)	MATERIAL (except standard AISI 304)	CONFIGURATION (specify the configuration code only when stated)	ACCESSORIES (only KIT BK and HD)	DESIGN	COLOR
CODE EXAMPLE									
WRITE YOUR OWN CODE

CODE EXAMPLE:

YOUR PRODUCT CODE:.....

CREATE YOUR OWN PRODUCT CODE WITH YOUR CHOSEN FEATURES

	FAMILY	SERIES	DIAMETER (except standard)	PRESSURE (specify only if 400 bar/5800 psi, 600 bar/8700 psi, 1000 bar/14500 psi)	MATERIAL (except standard AISI 304)	CONFIGURATION (specify the configuration code only when stated)	ACCESSORIES (only KIT BK and HD)	DESIGN	COLOR
CODE EXAMPLE									
WRITE YOUR OWN CODE

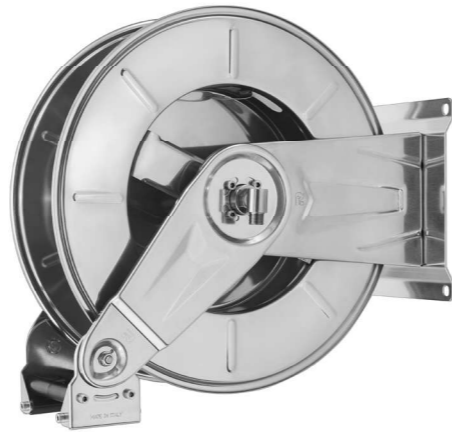
CODE EXAMPLE:

YOUR PRODUCT CODE:.....

HR EK 3500 230

with REMOTE CONTROL

ELECTRIC 230 VOLT



*std: standard

MATERIALS	
AISI 304	Stainless steel
AISI 316	Stainless steel AISI 316
CA	Cataphoric treatment steel
FE	Powder coating steel

QUANTITY FOR PALLET	8
BOX DIMENSIONS	60 x 60 x 60h cm / 24 x 24 x 24 in
MAX PALLET DIMENSIONS	80 x 120 x 180h cm / 31 x 47 x 71h in
WEIGHT WITHOUT BOX	34 Kg / 75 Lb
WEIGHT WITH BOX	36 Kg / 79 Lb
MAX PALLET WEIGHT	306 Kg / 675 Lb

CONFIGURATION	DIAMETER	MAX PRESSURE (bar / psi)	MATERIAL	MAX TEMPERATURE (°C / °F)	MAX HOSE LENGTH (m / ft)	STANDARD CODE
WATER	1/4"	0-250 / 0-3626	AISI 304 (std*) FE	140 / 284 discontinuous use	90 / 295	HR EK 3500 230
	5/16"				65 / 213	
	3/8"				45 / 148	
	1/2" (std*)				35 / 115	

HR EK 3500 380

with REMOTE CONTROL

ELECTRIC 380 VOLT



*std: standard

MATERIALS	
AISI 304	Stainless steel
AISI 316	Stainless steel AISI 316
CA	Cataphoric treatment steel
FE	Powder coating steel

QUANTITY FOR PALLET	8
BOX DIMENSIONS	60 x 60 x 60h cm / 24 x 24 x 24 in
MAX PALLET DIMENSIONS	80 x 120 x 180h cm / 31 x 47 x 71h in
WEIGHT WITHOUT BOX	34 Kg / 75 Lb
WEIGHT WITH BOX	36 Kg / 79 Lb
MAX PALLET WEIGHT	306 Kg / 675 Lb

CONFIGURATION	DIAMETER	MAX PRESSURE (bar / psi)	MATERIAL	MAX TEMPERATURE (°C / °F)	MAX HOSE LENGTH (m / ft)	STANDARD CODE
WATER	1/4"	0-250 / 0-3626	AISI 304 (std*) FE	140 / 284 discontinuous use	90 / 295	HR EK 3500 380
	5/16"				65 / 213	
	3/8"				45 / 148	
	1/2" (std*)				35 / 115	

HR EK 3500 S 230

without REMOTE CONTROL

ELECTRIC 230 VOLT



*std: standard

MATERIALS	
AISI 304	Stainless steel
AISI 316	Stainless steel AISI 316
CA	Cataphoric treatment steel
FE	Powder coating steel

QUANTITY FOR PALLET	8
BOX DIMENSIONS	60 x 60 x 60h cm / 24 x 24 x 24 in
MAX PALLET DIMENSIONS	80 x 120 x 180h cm / 31 x 47 x 71h in
WEIGHT WITHOUT BOX	34 Kg / 75 Lb
WEIGHT WITH BOX	36 Kg / 79 Lb
MAX PALLET WEIGHT	306 Kg / 675 Lb

CONFIGURATION	DIAMETER	MAX PRESSURE (bar / psi)	MATERIAL	MAX TEMPERATURE (°C / °F)	MAX HOSE LENGTH (m / ft)	STANDARD CODE
WATER	1/4"	0-250 / 0-3626	AISI 304 (std*) FE	140 / 284 discontinuous use	90 / 295	HR EK 3500 S 230
	5/16"				65 / 213	
	3/8"				45 / 148	
	1/2" (std*)				35 / 115	

HR EK 3500 S 380

without REMOTE CONTROL

ELECTRIC 380 VOLT



*std: standard

MATERIALS	
AISI 304	Stainless steel
AISI 316	Stainless steel AISI 316
CA	Cataphoric treatment steel
FE	Powder coating steel

QUANTITY FOR PALLET	8
BOX DIMENSIONS	60 x 60 x 60h cm / 24 x 24 x 24 in
MAX PALLET DIMENSIONS	80 x 120 x 180h cm / 31 x 47 x 71h in
WEIGHT WITHOUT BOX	34 Kg / 75 Lb
WEIGHT WITH BOX	36 Kg / 79 Lb
MAX PALLET WEIGHT	306 Kg / 675 Lb

CONFIGURATION	DIAMETER	MAX PRESSURE (bar / psi)	MATERIAL	MAX TEMPERATURE (°C / °F)	MAX HOSE LENGTH (m / ft)	STANDARD CODE
WATER	1/4"	0-250 / 0-3626	AISI 304 (std*) FE	140 / 284 discontinuous use	90 / 295	HR EK 3500 S 380
	5/16"				65 / 213	
	3/8"				45 / 148	
	1/2" (std*)				35 / 115	

CREATE YOUR OWN PRODUCT CODE WITH YOUR CHOSEN FEATURES

	FAMILY	SERIES	DIAMETER (except standard)	PRESSURE (specify only if 400 bar/5800 psi, 600 bar/8700 psi, 1000 bar/14500 psi)	MATERIAL (except standard AISI 304)	CONFIGURATION (specify the configuration code only when stated)	ACCESSORIES (only KIT BK and HD)	DESIGN	COLOR
CODE EXAMPLE									
WRITE YOUR OWN CODE

CODE EXAMPLE:

YOUR PRODUCT CODE:.....

CREATE YOUR OWN PRODUCT CODE WITH YOUR CHOSEN FEATURES

	FAMILY	SERIES	DIAMETER (except standard)	PRESSURE (specify only if 400 bar/5800 psi, 600 bar/8700 psi, 1000 bar/14500 psi)	MATERIAL (except standard AISI 304)	CONFIGURATION (specify the configuration code only when stated)	ACCESSORIES (only KIT BK and HD)	DESIGN	COLOR
CODE EXAMPLE									
WRITE YOUR OWN CODE

CODE EXAMPLE:

YOUR PRODUCT CODE:.....

AV EK 3

with REMOTE CONTROL

ELECTRIC **12** VOLT



*std: standard

MATERIALS	
AISI 304	Stainless steel
AISI 316	Stainless steel AISI 316
CA	Cataphoric treatment steel
FE	Powder coating steel

QUANTITY FOR PALLET	8
BOX DIMENSIONS	60 x 40 x 90h cm / 24 x 16 x 35h in
MAX PALLET DIMENSIONS	80 x 120 x 200h cm / 31 x 47 x 79h in
WEIGHT WITHOUT BOX	38 Kg / 84 Lb
WEIGHT WITH BOX	40 Kg / 88 Lb
MAX PALLET WEIGHT	338 Kg / 745 Lb

CONFIGURATION	DIAMETER	MAX PRESSURE (bar / psi)	MATERIAL	MAX TEMPERATURE (°C / °F)	MAX HOSE LENGTH (m / ft)	STANDARD CODE
WATER	1/4"	0-250 / 0-3626	AISI 304 (std*) FE	140 / 284 discontinuous use	100 / 328	AV EK 3
	5/16"				80 / 262	
	3/8"				60 / 197	
	1/2" (std*)					

HR EK 1

with REMOTE CONTROL

ELECTRIC **12** VOLT



*std: standard

MATERIALS	
AISI 304	Stainless steel
AISI 316	Stainless steel AISI 316
CA	Cataphoric treatment steel
FE	Powder coating steel

QUANTITY FOR PALLET	2
BOX DIMENSIONS	70 x 90 x 80h cm / 27 x 35 x 31h in
MAX PALLET DIMENSIONS	80 x 120 x 180h cm / 31 x 47 x 71h in
WEIGHT WITHOUT BOX	42 Kg / 92 Lb
WEIGHT WITH BOX	44 Kg / 97 Lb
MAX PALLET WEIGHT	106 Kg / 234 Lb

CONFIGURATION	DIAMETER	MAX PRESSURE (bar / psi)	MATERIAL	MAX TEMPERATURE (°C / °F)	MAX HOSE LENGTH (m / ft)	STANDARD CODE
WATER	1/4"	0-250 / 0-3626	AISI 304 (std*) FE	140 / 284 discontinuous use	100 / 328	HR EK 1
	5/16"				80 / 262	
	3/8"					
	1/2" (std*)					

AV EK 3 S

without REMOTE CONTROL

ELECTRIC **12** VOLT



*std: standard

MATERIALS	
AISI 304	Stainless steel
AISI 316	Stainless steel AISI 316
CA	Cataphoric treatment steel
FE	Powder coating steel

QUANTITY FOR PALLET	8
BOX DIMENSIONS	60 x 40 x 90h cm / 24 x 16 x 35h in
MAX PALLET DIMENSIONS	80 x 120 x 200h cm / 31 x 47 x 79h in
WEIGHT WITHOUT BOX	38 Kg / 84 Lb
WEIGHT WITH BOX	40 Kg / 88 Lb
MAX PALLET WEIGHT	338 Kg / 745 Lb

CONFIGURATION	DIAMETER	MAX PRESSURE (bar / psi)	MATERIAL	MAX TEMPERATURE (°C / °F)	MAX HOSE LENGTH (m / ft)	STANDARD CODE
WATER	1/4"	0-250 / 0-3626	AISI 304 (std*) FE	140 / 284 discontinuous use	150 / 492	AV EK 3 S
	5/16"				130 / 426	
	3/8"				80 / 262	
	1/2" (std*)				60 / 197	

HR EK 1 S

without REMOTE CONTROL

ELECTRIC **12** VOLT



*std: standard

MATERIALS	
AISI 304	Stainless steel
AISI 316	Stainless steel AISI 316
CA	Cataphoric treatment steel
FE	Powder coating steel

QUANTITY FOR PALLET	2
BOX DIMENSIONS	70 x 90 x 80h cm / 27 x 35 x 31h in
MAX PALLET DIMENSIONS	80 x 120 x 180h cm / 31 x 47 x 71h in
WEIGHT WITHOUT BOX	42 Kg / 92 Lb
WEIGHT WITH BOX	44 Kg / 97 Lb
MAX PALLET WEIGHT	106 Kg / 234 Lb

CONFIGURATION	DIAMETER	MAX PRESSURE (bar / psi)	MATERIAL	MAX TEMPERATURE (°C / °F)	MAX HOSE LENGTH (m / ft)	STANDARD CODE
WATER	1/4"	0-250 / 0-3626	AISI 304 (std*) FE	140 / 284 discontinuous use	160 / 525	HR EK 1 S
	5/16"				130 / 426	
	3/8"				110 / 361	
	1/2" (std*)				80 / 262	

CREATE YOUR OWN PRODUCT CODE WITH YOUR CHOSEN FEATURES

	FAMILY	SERIES	DIAMETER (except standard)	PRESSURE (specify only if 400 bar/5800 psi, 600 bar/8700 psi, 1000 bar/14500 psi)	MATERIAL (except standard AISI 304)	CONFIGURATION (specify the configuration code only when stated)	ACCESSORIES (only KIT BK and HD)	DESIGN	COLOR
CODE EXAMPLE									
WRITE YOUR OWN CODE

CODE EXAMPLE:

YOUR PRODUCT CODE:.....

CREATE YOUR OWN PRODUCT CODE WITH YOUR CHOSEN FEATURES

	FAMILY	SERIES	DIAMETER (except standard)	PRESSURE (specify only if 400 bar/5800 psi, 600 bar/8700 psi, 1000 bar/14500 psi)	MATERIAL (except standard AISI 304)	CONFIGURATION (specify the configuration code only when stated)	ACCESSORIES (only KIT BK and HD)	DESIGN	COLOR
CODE EXAMPLE									
WRITE YOUR OWN CODE

CODE EXAMPLE:

YOUR PRODUCT CODE:.....

HR EK 1 24

with **REMOTE CONTROL**

E ELECTRIC **24** VOLT

*std: standard

MATERIALS	
AISI 304	Stainless steel
AISI 316	Stainless steel AISI 316
CA	Cataphoric treatment steel
FE	Powder coating steel

QUANTITY FOR PALLET	2
BOX DIMENSIONS	70 x 90 x 80h cm / 27 x 35 x 31h in
MAX PALLET DIMENSIONS	80 x 120 x 180h cm / 31 x 47 x 71h in
WEIGHT WITHOUT BOX	42 Kg / 92 Lb
WEIGHT WITH BOX	44 Kg / 97 Lb
MAX PALLET WEIGHT	106 Kg / 234 Lb



CONFIGURATION	DIAMETER	MAX PRESSURE (bar / psi)	MATERIAL	MAX TEMPERATURE (°C / °F)	MAX HOSE LENGTH (m / ft)	STANDARD CODE
WATER	1/4" 5/16" 3/8"	0-250 / 0-3626	AISI 304 (std*) FE	140 / 284 discontinuous use	100 / 328	HR EK 1 24
	80 / 262					

HR EK 1 230

with **REMOTE CONTROL**

E ELECTRIC **230** VOLT

*std: standard

MATERIALS	
AISI 304	Stainless steel
AISI 316	Stainless steel AISI 316
CA	Cataphoric treatment steel
FE	Powder coating steel

QUANTITY FOR PALLET	2
BOX DIMENSIONS	70 x 90 x 80h cm / 27 x 35 x 31h in
MAX PALLET DIMENSIONS	80 x 120 x 180h cm / 31 x 47 x 71h in
WEIGHT WITHOUT BOX	42 Kg / 92 Lb
WEIGHT WITH BOX	44 Kg / 97 Lb
MAX PALLET WEIGHT	106 Kg / 234 Lb



CONFIGURATION	DIAMETER	MAX PRESSURE (bar / psi)	MATERIAL	MAX TEMPERATURE (°C / °F)	MAX HOSE LENGTH (m / ft)	STANDARD CODE
WATER	1/4" 5/16" 3/8"	0-250 / 0-3626	AISI 304 (std*) FE	140 / 284 discontinuous use	100 / 328	HR EK 1 230
	80 / 262					

HR EK 1 S 24

without **REMOTE CONTROL**

E ELECTRIC **24** VOLT

*std: standard

MATERIALS	
AISI 304	Stainless steel
AISI 316	Stainless steel AISI 316
CA	Cataphoric treatment steel
FE	Powder coating steel

QUANTITY FOR PALLET	2
BOX DIMENSIONS	70 x 90 x 80h cm / 27 x 35 x 31h in
MAX PALLET DIMENSIONS	80 x 120 x 180h cm / 31 x 47 x 71h in
WEIGHT WITHOUT BOX	42 Kg / 92 Lb
WEIGHT WITH BOX	44 Kg / 97 Lb
MAX PALLET WEIGHT	106 Kg / 234 Lb



CONFIGURATION	DIAMETER	MAX PRESSURE (bar / psi)	MATERIAL	MAX TEMPERATURE (°C / °F)	MAX HOSE LENGTH (m / ft)	STANDARD CODE
WATER	1/4"	0-250 / 0-3626	AISI 304 (std*) FE	140 / 284 discontinuous use	160 / 525	HR EK 1 S 24
	5/16"				130 / 426	
	3/8"				110 / 361	
	1/2" (std*)				80 / 262	

HR EK 1 S 230

without **REMOTE CONTROL**

E ELECTRIC **230** VOLT

*std: standard

MATERIALS	
AISI 304	Stainless steel
AISI 316	Stainless steel AISI 316
CA	Cataphoric treatment steel
FE	Powder coating steel

QUANTITY FOR PALLET	2
BOX DIMENSIONS	70 x 90 x 80h cm / 27 x 35 x 31h in
MAX PALLET DIMENSIONS	80 x 120 x 180h cm / 31 x 47 x 71h in
WEIGHT WITHOUT BOX	42 Kg / 92 Lb
WEIGHT WITH BOX	44 Kg / 97 Lb
MAX PALLET WEIGHT	106 Kg / 234 Lb



CONFIGURATION	DIAMETER	MAX PRESSURE (bar / psi)	MATERIAL	MAX TEMPERATURE (°C / °F)	MAX HOSE LENGTH (m / ft)	STANDARD CODE
WATER	1/4"	0-250 / 0-3626	AISI 304 (std*) FE	140 / 284 discontinuous use	160 / 525	HR EK 1 S 230
	5/16"				130 / 426	
	3/8"				110 / 361	
	1/2" (std*)				80 / 262	

CREATE YOUR OWN PRODUCT CODE WITH YOUR CHOSEN FEATURES

	FAMILY	SERIES	DIAMETER (except standard)	PRESSURE (specify only if 400 bar/5800 psi, 600 bar/8700 psi, 1000 bar/14500 psi)	MATERIAL (except standard AISI 304)	CONFIGURATION (specify the configuration code only when stated)	ACCESSORIES (only KIT BK and HD)	DESIGN	COLOR
CODE EXAMPLE									
WRITE YOUR OWN CODE

CODE EXAMPLE:

YOUR PRODUCT CODE:.....

CREATE YOUR OWN PRODUCT CODE WITH YOUR CHOSEN FEATURES

	FAMILY	SERIES	DIAMETER (except standard)	PRESSURE (specify only if 400 bar/5800 psi, 600 bar/8700 psi, 1000 bar/14500 psi)	MATERIAL (except standard AISI 304)	CONFIGURATION (specify the configuration code only when stated)	ACCESSORIES (only KIT BK and HD)	DESIGN	COLOR
CODE EXAMPLE									
WRITE YOUR OWN CODE

CODE EXAMPLE:

YOUR PRODUCT CODE:.....

HR EK 1 380

with **REMOTE CONTROL**

E ELECTRIC **380** VOLT



*std: standard

MATERIALS	
AISI 304	Stainless steel
AISI 316	Stainless steel AISI 316
CA	Cataphoric treatment steel
FE	Powder coating steel

QUANTITY FOR PALLET	2
BOX DIMENSIONS	70 x 90 x 80h cm / 27 x 35 x 31h in
MAX PALLET DIMENSIONS	80 x 120 x 180h cm / 31 x 47 x 71h in
WEIGHT WITHOUT BOX	42 Kg / 92 Lb
WEIGHT WITH BOX	44 Kg / 97 Lb
MAX PALLET WEIGHT	106 Kg / 234 Lb

CONFIGURATION	DIAMETER	MAX PRESSURE (bar / psi)	MATERIAL	MAX TEMPERATURE (°C / °F)	MAX HOSE LENGTH (m / ft)	STANDARD CODE
WATER	1/4" 5/16" 3/8"	0-250 / 0-3626	AISI 304 (std*) FE	140 / 284 discontinuous use	100 / 328	HR EK 1 380
	80 / 262					

HR EK 0

with **REMOTE CONTROL**

E ELECTRIC **12** VOLT



*std: standard

MATERIALS	
AISI 304	Stainless steel
AISI 316	Stainless steel AISI 316
CA	Cataphoric treatment steel
FE	Powder coating steel

QUANTITY FOR PALLET	4
BOX DIMENSIONS	60 x 80 x 70h cm / 24 x 31 x 27h in
MAX PALLET DIMENSIONS	60 x 120 x 160h cm / 24 x 47 x 63h in
WEIGHT WITHOUT BOX	38 Kg / 84 Lb
WEIGHT WITH BOX	40 Kg / 88 Lb
MAX PALLET WEIGHT	178 Kg / 392 Lb

CONFIGURATION	DIAMETER	MAX PRESSURE (bar / psi)	MATERIAL	MAX TEMPERATURE (°C / °F)	MAX HOSE LENGTH (m / ft)	STANDARD CODE
WATER	1/4" 5/16" 3/8" 1/2" (std*)	0-250 / 0-3626	AISI 304 (std*) FE	140 / 284 discontinuous use	100 / 328	HR EK 0

HR EK 1 S 380

without **REMOTE CONTROL**

E ELECTRIC **380** VOLT



*std: standard

MATERIALS	
AISI 304	Stainless steel
AISI 316	Stainless steel AISI 316
CA	Cataphoric treatment steel
FE	Powder coating steel

QUANTITY FOR PALLET	2
BOX DIMENSIONS	70 x 90 x 80h cm / 27 x 35 x 31h in
MAX PALLET DIMENSIONS	80 x 120 x 180h cm / 31 x 47 x 71h in
WEIGHT WITHOUT BOX	42 Kg / 92 Lb
WEIGHT WITH BOX	44 Kg / 97 Lb
MAX PALLET WEIGHT	106 Kg / 234 Lb

CONFIGURATION	DIAMETER	MAX PRESSURE (bar / psi)	MATERIAL	MAX TEMPERATURE (°C / °F)	MAX HOSE LENGTH (m / ft)	STANDARD CODE
WATER	1/4"	0-250 / 0-3626	AISI 304 (std*) FE	140 / 284 discontinuous use	160 / 525	HR EK 1 S 380
	5/16"				130 / 426	
	3/8"				110 / 361	
	1/2" (std*)				80 / 262	

HR EK 0 S

without **REMOTE CONTROL**

E ELECTRIC **12** VOLT



*std: standard

MATERIALS	
AISI 304	Stainless steel
AISI 316	Stainless steel AISI 316
CA	Cataphoric treatment steel
FE	Powder coating steel

QUANTITY FOR PALLET	4
BOX DIMENSIONS	60 x 80 x 70h cm / 24 x 31 x 27h in
MAX PALLET DIMENSIONS	60 x 120 x 160h cm / 24 x 47 x 63h in
WEIGHT WITHOUT BOX	38 Kg / 84 Lb
WEIGHT WITH BOX	40 Kg / 88 Lb
MAX PALLET WEIGHT	178 Kg / 392 Lb

CONFIGURATION	DIAMETER	MAX PRESSURE (bar / psi)	MATERIAL	MAX TEMPERATURE (°C / °F)	MAX HOSE LENGTH (m / ft)	STANDARD CODE
WATER	1/4"	0-250 / 0-3626	AISI 304 (std*) FE	140 / 284 discontinuous use	180 / 590	HR EK 0 S
	5/16"				150 / 492	
	3/8"				130 / 426	
	1/2" (std*)				100 / 328	

CREATE YOUR OWN PRODUCT CODE WITH YOUR CHOSEN FEATURES

	FAMILY	SERIES	DIAMETER (except standard)	PRESSURE (specify only if 400 bar/5800 psi, 600 bar/8700 psi, 1000 bar/14500 psi)	MATERIAL (except standard AISI 304)	CONFIGURATION (specify the configuration code only when stated)	ACCESSORIES (only KIT BK and HD)	DESIGN	COLOR
CODE EXAMPLE									
WRITE YOUR OWN CODE

CODE EXAMPLE:

YOUR PRODUCT CODE:.....

CREATE YOUR OWN PRODUCT CODE WITH YOUR CHOSEN FEATURES

	FAMILY	SERIES	DIAMETER (except standard)	PRESSURE (specify only if 400 bar/5800 psi, 600 bar/8700 psi, 1000 bar/14500 psi)	MATERIAL (except standard AISI 304)	CONFIGURATION (specify the configuration code only when stated)	ACCESSORIES (only KIT BK and HD)	DESIGN	COLOR
CODE EXAMPLE									
WRITE YOUR OWN CODE

CODE EXAMPLE:

YOUR PRODUCT CODE:.....

HR EK 0 24

with **REMOTE CONTROL**

E ELECTRIC **24** VOLT



*std: standard

MATERIALS	
AISI 304	Stainless steel
AISI 316	Stainless steel AISI 316
CA	Cataphoric treatment steel
FE	Powder coating steel

QUANTITY FOR PALLET	4
BOX DIMENSIONS	60 x 80 x 70h cm / 24 x 31 x 27h in
MAX PALLET DIMENSIONS	60 x 120 x 160h cm / 24 x 47 x 63h in
WEIGHT WITHOUT BOX	38 Kg / 84 Lb
WEIGHT WITH BOX	40 Kg / 88 Lb
MAX PALLET WEIGHT	178 Kg / 392 Lb

CONFIGURATION	DIAMETER	MAX PRESSURE (bar / psi)	MATERIAL	MAX TEMPERATURE (°C / °F)	MAX HOSE LENGTH (m / ft)	STANDARD CODE
WATER	1/4"	0-250 / 0-3626	AISI 304 (std*) FE	140 / 284 discontinuous use	100 / 328	HR EK 0 24
	5/16"					
	3/8"					
	1/2" (std*)					

HR EK 0 230

with **REMOTE CONTROL**

E ELECTRIC **230** VOLT



*std: standard

MATERIALS	
AISI 304	Stainless steel
AISI 316	Stainless steel AISI 316
CA	Cataphoric treatment steel
FE	Powder coating steel

QUANTITY FOR PALLET	4
BOX DIMENSIONS	60 x 80 x 70h cm / 24 x 31 x 27h in
MAX PALLET DIMENSIONS	60 x 120 x 160h cm / 24 x 47 x 63h in
WEIGHT WITHOUT BOX	38 Kg / 84 Lb
WEIGHT WITH BOX	40 Kg / 88 Lb
MAX PALLET WEIGHT	178 Kg / 392 Lb

CONFIGURATION	DIAMETER	MAX PRESSURE (bar / psi)	MATERIAL	MAX TEMPERATURE (°C / °F)	MAX HOSE LENGTH (m / ft)	STANDARD CODE
WATER	1/4"	0-250 / 0-3626	AISI 304 (std*) FE	140 / 284 discontinuous use	100 / 328	HR EK 0 230
	5/16"					
	3/8"					
	1/2" (std*)					

HR EK 0 S 24

without **REMOTE CONTROL**

E ELECTRIC **24** VOLT



*std: standard

MATERIALS	
AISI 304	Stainless steel
AISI 316	Stainless steel AISI 316
CA	Cataphoric treatment steel
FE	Powder coating steel

QUANTITY FOR PALLET	4
BOX DIMENSIONS	60 x 80 x 70h cm / 24 x 31 x 27h in
MAX PALLET DIMENSIONS	60 x 120 x 160h cm / 24 x 47 x 63h in
WEIGHT WITHOUT BOX	38 Kg / 84 Lb
WEIGHT WITH BOX	40 Kg / 88 Lb
MAX PALLET WEIGHT	178 Kg / 392 Lb

CONFIGURATION	DIAMETER	MAX PRESSURE (bar / psi)	MATERIAL	MAX TEMPERATURE (°C / °F)	MAX HOSE LENGTH (m / ft)	STANDARD CODE
WATER	1/4"	0-250 / 0-3626	AISI 304 (std*) FE	140 / 284 discontinuous use	180 / 590	HR EK 0 S 24
	5/16"				150 / 492	
	3/8"				130 / 426	
	1/2" (std*)				100 / 328	

HR EK 0 S 230

without **REMOTE CONTROL**

E ELECTRIC **230** VOLT



*std: standard

MATERIALS	
AISI 304	Stainless steel
AISI 316	Stainless steel AISI 316
CA	Cataphoric treatment steel
FE	Powder coating steel

QUANTITY FOR PALLET	4
BOX DIMENSIONS	60 x 80 x 70h cm / 24 x 31 x 27h in
MAX PALLET DIMENSIONS	60 x 120 x 160h cm / 24 x 47 x 63h in
WEIGHT WITHOUT BOX	38 Kg / 84 Lb
WEIGHT WITH BOX	40 Kg / 88 Lb
MAX PALLET WEIGHT	178 Kg / 392 Lb

CONFIGURATION	DIAMETER	MAX PRESSURE (bar / psi)	MATERIAL	MAX TEMPERATURE (°C / °F)	MAX HOSE LENGTH (m / ft)	STANDARD CODE
WATER	1/4"	0-250 / 0-3626	AISI 304 (std*) FE	140 / 284 discontinuous use	180 / 590	HR EK 0 S 230
	5/16"				150 / 492	
	3/8"				130 / 426	
	1/2" (std*)				100 / 328	

CREATE YOUR OWN PRODUCT CODE WITH YOUR CHOSEN FEATURES

	FAMILY	SERIES	DIAMETER (except standard)	PRESSURE (specify only if 400 bar/5800 psi, 600 bar/8700 psi, 1000 bar/14500 psi)	MATERIAL (except standard AISI 304)	CONFIGURATION (specify the configuration code only when stated)	ACCESSORIES (only KIT BK and HD)	DESIGN	COLOR
CODE EXAMPLE									
WRITE YOUR OWN CODE

CODE EXAMPLE:

YOUR PRODUCT CODE:.....

CREATE YOUR OWN PRODUCT CODE WITH YOUR CHOSEN FEATURES

	FAMILY	SERIES	DIAMETER (except standard)	PRESSURE (specify only if 400 bar/5800 psi, 600 bar/8700 psi, 1000 bar/14500 psi)	MATERIAL (except standard AISI 304)	CONFIGURATION (specify the configuration code only when stated)	ACCESSORIES (only KIT BK and HD)	DESIGN	COLOR
CODE EXAMPLE									
WRITE YOUR OWN CODE

CODE EXAMPLE:

YOUR PRODUCT CODE:.....

HR EK 0 380

with **REMOTE CONTROL**

ELECTRIC **380 VOLT**



*std: standard

MATERIALS	
AISI 304	Stainless steel
AISI 316	Stainless steel AISI 316
CA	Cataphoric treatment steel
FE	Powder coating steel

QUANTITY FOR PALLET	4
BOX DIMENSIONS	60 x 80 x 70h cm / 24 x 31 x 27h in
MAX PALLET DIMENSIONS	60 x 120 x 160h cm / 24 x 47 x 63h in
WEIGHT WITHOUT BOX	38 Kg / 84 Lb
WEIGHT WITH BOX	40 Kg / 88 Lb
MAX PALLET WEIGHT	178 Kg / 392 Lb

CONFIGURATION	DIAMETER	MAX PRESSURE (bar / psi)	MATERIAL	MAX TEMPERATURE (°C / °F)	MAX HOSE LENGTH (m / ft)	STANDARD CODE
WATER	1/4"	0-250 / 0-3626	AISI 304 (std*) FE	140 / 284 discontinuous use	100 / 328	HR EK 0 380
	5/16"					
	3/8"					
	1/2" (std*)					

AV EK 4

with **REMOTE CONTROL**

ELECTRIC **12 VOLT**



*std: standard

MATERIALS	
AISI 304	Stainless steel
AISI 316	Stainless steel AISI 316
CA	Cataphoric treatment steel
FE	Powder coating steel

QUANTITY FOR PALLET	4
BOX DIMENSIONS	60 x 60 x 90h cm / 24 x 24 x 35h in
MAX PALLET DIMENSIONS	80 x 120 x 200h cm / 31 x 47 x 79h in
WEIGHT WITHOUT BOX	38 Kg / 84 Lb
WEIGHT WITH BOX	40 Kg / 88 Lb
MAX PALLET WEIGHT	338 Kg / 745 Lb

CONFIGURATION	DIAMETER	MAX PRESSURE (bar / psi)	MATERIAL	MAX TEMPERATURE (°C / °F)	MAX HOSE LENGTH (m / ft)	STANDARD CODE
WATER	1/4"	0-250 / 0-3626	AISI 304 (std*) FE	140 / 284 discontinuous use	100 / 328	AV EK 4
	5/16"					
	3/8"					
	1/2" (std*)					

HR EK 0 S 380

without **REMOTE CONTROL**

ELECTRIC **380 VOLT**



*std: standard

MATERIALS	
AISI 304	Stainless steel
AISI 316	Stainless steel AISI 316
CA	Cataphoric treatment steel
FE	Powder coating steel

QUANTITY FOR PALLET	4
BOX DIMENSIONS	60 x 80 x 70h cm / 24 x 31 x 27h in
MAX PALLET DIMENSIONS	60 x 120 x 160h cm / 24 x 47 x 63h in
WEIGHT WITHOUT BOX	38 Kg / 84 Lb
WEIGHT WITH BOX	40 Kg / 88 Lb
MAX PALLET WEIGHT	178 Kg / 392 Lb

CONFIGURATION	DIAMETER	MAX PRESSURE (bar / psi)	MATERIAL	MAX TEMPERATURE (°C / °F)	MAX HOSE LENGTH (m / ft)	STANDARD CODE
WATER	1/4"	0-250 / 0-3626	AISI 304 (std*) FE	140 / 284 discontinuous use	180 / 590	HR EK 0 S 380
	5/16"				150 / 492	
	3/8"				130 / 426	
	1/2" (std*)				100 / 328	

AV EK 4 S

without **REMOTE CONTROL**

ELECTRIC **12 VOLT**



*std: standard

MATERIALS	
AISI 304	Stainless steel
AISI 316	Stainless steel AISI 316
CA	Cataphoric treatment steel
FE	Powder coating steel

QUANTITY FOR PALLET	4
BOX DIMENSIONS	60 x 60 x 90h cm / 24 x 24 x 35h in
MAX PALLET DIMENSIONS	80 x 120 x 200h cm / 31 x 47 x 79h in
WEIGHT WITHOUT BOX	38 Kg / 84 Lb
WEIGHT WITH BOX	40 Kg / 88 Lb
MAX PALLET WEIGHT	338 Kg / 745 Lb

CONFIGURATION	DIAMETER	MAX PRESSURE (bar / psi)	MATERIAL	MAX TEMPERATURE (°C / °F)	MAX HOSE LENGTH (m / ft)	STANDARD CODE
WATER	1/4"	0-250 / 0-3626	AISI 304 (std*) FE	140 / 284 discontinuous use	180 / 590	AV EK 4 S
	5/16"				150 / 492	
	3/8"				120 / 394	
	1/2" (std*)				100 / 328	

CREATE YOUR OWN PRODUCT CODE WITH YOUR CHOSEN FEATURES

	FAMILY	SERIES	DIAMETER (except standard)	PRESSURE (specify only if 400 bar/5800 psi, 600 bar/8700 psi, 1000 bar/14500 psi)	MATERIAL (except standard AISI 304)	CONFIGURATION (specify the configuration code only when stated)	ACCESSORIES (only KIT BK and HD)	DESIGN	COLOR
CODE EXAMPLE									
WRITE YOUR OWN CODE									

CODE EXAMPLE:

YOUR PRODUCT CODE:.....

CREATE YOUR OWN PRODUCT CODE WITH YOUR CHOSEN FEATURES

	FAMILY	SERIES	DIAMETER (except standard)	PRESSURE (specify only if 400 bar/5800 psi, 600 bar/8700 psi, 1000 bar/14500 psi)	MATERIAL (except standard AISI 304)	CONFIGURATION (specify the configuration code only when stated)	ACCESSORIES (only KIT BK and HD)	DESIGN	COLOR
CODE EXAMPLE	AV	EK 4							
WRITE YOUR OWN CODE									

CODE EXAMPLE: AV EK 4

YOUR PRODUCT CODE:.....

AV EK 8000

with **REMOTE CONTROL**

E ELECTRIC **12** VOLT



*std: standard

MATERIALS	
AISI 304	Stainless steel
AISI 316	Stainless steel AISI 316
CA	Cataphoric treatment steel
FE	Powder coating steel

QUANTITY FOR PALLET	4
BOX DIMENSIONS	60 x 80 x 70h cm / 24 x 31 x 27h in
MAX PALLET DIMENSIONS	60 x 120 x 160h cm / 24 x 47 x 63h in
WEIGHT WITHOUT BOX	46 Kg / 101 Lb
WEIGHT WITH BOX	48 Kg / 106 Lb
MAX PALLET WEIGHT	210 Kg / 463 Kg

CONFIGURATION	DIAMETER	MAX PRESSURE (bar / psi)	MATERIAL	MAX TEMPERATURE (°C / °F)	MAX HOSE LENGTH (m / ft)	STANDARD CODE
WATER	1/4"	0-250 / 0-3626	AISI 304 (std*) FE	140 / 284 discontinuous use	100 / 328	AV EK 8000
	5/16"					
	3/8"					
	1/2" (std*)					

AV EK 8000 24

with **REMOTE CONTROL**

E ELECTRIC **24** VOLT



*std: standard

MATERIALS	
AISI 304	Stainless steel
AISI 316	Stainless steel AISI 316
CA	Cataphoric treatment steel
FE	Powder coating steel

QUANTITY FOR PALLET	4
BOX DIMENSIONS	60 x 80 x 70h cm / 24 x 31 x 27h in
MAX PALLET DIMENSIONS	60 x 120 x 160h cm / 24 x 47 x 63h in
WEIGHT WITHOUT BOX	46 Kg / 101 Lb
WEIGHT WITH BOX	48 Kg / 106 Lb
MAX PALLET WEIGHT	210 Kg / 463 Kg

CONFIGURATION	DIAMETER	MAX PRESSURE (bar / psi)	MATERIAL	MAX TEMPERATURE (°C / °F)	MAX HOSE LENGTH (m / ft)	STANDARD CODE
WATER	1/4"	0-250 / 0-3626	AISI 304 (std*) FE	140 / 284 discontinuous use	100 / 328	AV EK 8000 24
	5/16"					
	3/8"					
	1/2" (std*)					

AV EK 8000 S

without **REMOTE CONTROL**

E ELECTRIC **12** VOLT



*std: standard

MATERIALS	
AISI 304	Stainless steel
AISI 316	Stainless steel AISI 316
CA	Cataphoric treatment steel
FE	Powder coating steel

QUANTITY FOR PALLET	4
BOX DIMENSIONS	60 x 80 x 70h cm / 24 x 31 x 27h in
MAX PALLET DIMENSIONS	60 x 120 x 160h cm / 24 x 47 x 63h in
WEIGHT WITHOUT BOX	46 Kg / 101 Lb
WEIGHT WITH BOX	48 Kg / 106 Lb
MAX PALLET WEIGHT	210 Kg / 463 Kg

CONFIGURATION	DIAMETER	MAX PRESSURE (bar / psi)	MATERIAL	MAX TEMPERATURE (°C / °F)	MAX HOSE LENGTH (m / ft)	STANDARD CODE
WATER	1/4"	0-250 / 0-3626	AISI 304 (std*) FE	140 / 284 discontinuous use	200 / 656	AV EK 8000 S
	5/16"				180 / 590	
	3/8"				150 / 492	
	1/2" (std*)				120 / 394	

AV EK 8000 S 24

without **REMOTE CONTROL**

E ELECTRIC **24** VOLT



*std: standard

MATERIALS	
AISI 304	Stainless steel
AISI 316	Stainless steel AISI 316
CA	Cataphoric treatment steel
FE	Powder coating steel

QUANTITY FOR PALLET	4
BOX DIMENSIONS	60 x 80 x 70h cm / 24 x 31 x 27h in
MAX PALLET DIMENSIONS	60 x 120 x 160h cm / 24 x 47 x 63h in
WEIGHT WITHOUT BOX	46 Kg / 101 Lb
WEIGHT WITH BOX	48 Kg / 106 Lb
MAX PALLET WEIGHT	210 Kg / 463 Kg

CONFIGURATION	DIAMETER	MAX PRESSURE (bar / psi)	MATERIAL	MAX TEMPERATURE (°C / °F)	MAX HOSE LENGTH (m / ft)	STANDARD CODE
WATER	1/4"	0-250 / 0-3626	AISI 304 (std*) FE	140 / 284 discontinuous use	200 / 656	AV EK 8000 S 24
	5/16"				180 / 590	
	3/8"				150 / 492	
	1/2" (std*)				120 / 394	

CREATE YOUR OWN PRODUCT CODE WITH YOUR CHOSEN FEATURES

	FAMILY	SERIES	DIAMETER (except standard)	PRESSURE (specify only if 400 bar/5800 psi, 600 bar/8700 psi, 1000 bar/14500 psi)	MATERIAL (except standard AISI 304)	CONFIGURATION (specify the configuration code only when stated)	ACCESSORIES (only KIT BK and HD)	DESIGN	COLOR
CODE EXAMPLE									
WRITE YOUR OWN CODE

CODE EXAMPLE:

YOUR PRODUCT CODE:.....

CREATE YOUR OWN PRODUCT CODE WITH YOUR CHOSEN FEATURES

	FAMILY	SERIES	DIAMETER (except standard)	PRESSURE (specify only if 400 bar/5800 psi, 600 bar/8700 psi, 1000 bar/14500 psi)	MATERIAL (except standard AISI 304)	CONFIGURATION (specify the configuration code only when stated)	ACCESSORIES (only KIT BK and HD)	DESIGN	COLOR
CODE EXAMPLE									
WRITE YOUR OWN CODE

CODE EXAMPLE:

YOUR PRODUCT CODE:.....

AV EK 8000 230

with **REMOTE CONTROL**

ELECTRIC **230 VOLT**



*std: standard

MATERIALS	
AISI 304	Stainless steel
AISI 316	Stainless steel AISI 316
CA	Cataphoric treatment steel
FE	Powder coating steel

QUANTITY FOR PALLET	4
BOX DIMENSIONS	60 x 80 x 70h cm / 24 x 31 x 27h in
MAX PALLET DIMENSIONS	60 x 120 x 160h cm / 24 x 47 x 63h in
WEIGHT WITHOUT BOX	46 Kg / 101 Lb
WEIGHT WITH BOX	48 Kg / 106 Lb
MAX PALLET WEIGHT	210 Kg / 463 Kg

CONFIGURATION	DIAMETER	MAX PRESSURE (bar / psi)	MATERIAL	MAX TEMPERATURE (°C / °F)	MAX HOSE LENGTH (m / ft)	STANDARD CODE
WATER	1/4"	0-250 / 0-3626	AISI 304 (std*) FE	140 / 284 discontinuous use	100 / 328	AV EK 8000 230
	5/16"					
	3/8"					
	1/2" (std*)					

AV EK 8000 380

with **REMOTE CONTROL**

ELECTRIC **380 VOLT**



*std: standard

MATERIALS	
AISI 304	Stainless steel
AISI 316	Stainless steel AISI 316
CA	Cataphoric treatment steel
FE	Powder coating steel

QUANTITY FOR PALLET	4
BOX DIMENSIONS	60 x 80 x 70h cm / 24 x 31 x 27h in
MAX PALLET DIMENSIONS	60 x 120 x 160h cm / 24 x 47 x 63h in
WEIGHT WITHOUT BOX	46 Kg / 101 Lb
WEIGHT WITH BOX	48 Kg / 106 Lb
MAX PALLET WEIGHT	210 Kg / 463 Kg

CONFIGURATION	DIAMETER	MAX PRESSURE (bar / psi)	MATERIAL	MAX TEMPERATURE (°C / °F)	MAX HOSE LENGTH (m / ft)	STANDARD CODE
WATER	1/4"	0-250 / 0-3626	AISI 304 (std*) FE	140 / 284 discontinuous use	100 / 328	AV EK 8000 380
	5/16"					
	3/8"					
	1/2" (std*)					

AV EK 8000 S 230

without **REMOTE CONTROL**

ELECTRIC **230 VOLT**



*std: standard

MATERIALS	
AISI 304	Stainless steel
AISI 316	Stainless steel AISI 316
CA	Cataphoric treatment steel
FE	Powder coating steel

QUANTITY FOR PALLET	4
BOX DIMENSIONS	60 x 80 x 70h cm / 24 x 31 x 27h in
MAX PALLET DIMENSIONS	60 x 120 x 160h cm / 24 x 47 x 63h in
WEIGHT WITHOUT BOX	46 Kg / 101 Lb
WEIGHT WITH BOX	48 Kg / 106 Lb
MAX PALLET WEIGHT	210 Kg / 463 Kg

CONFIGURATION	DIAMETER	MAX PRESSURE (bar / psi)	MATERIAL	MAX TEMPERATURE (°C / °F)	MAX HOSE LENGTH (m / ft)	STANDARD CODE
WATER	1/4"	0-250 / 0-3626	AISI 304 (std*) FE	140 / 284 discontinuous use	200 / 656	AV EK 8000 S 230
	5/16"				180 / 590	
	3/8"				150 / 492	
	1/2" (std*)				120 / 394	

AV EK 8000 S 380

without **REMOTE CONTROL**

ELECTRIC **380 VOLT**



*std: standard

MATERIALS	
AISI 304	Stainless steel
AISI 316	Stainless steel AISI 316
CA	Cataphoric treatment steel
FE	Powder coating steel

QUANTITY FOR PALLET	4
BOX DIMENSIONS	60 x 80 x 70h cm / 24 x 31 x 27h in
MAX PALLET DIMENSIONS	60 x 120 x 160h cm / 24 x 47 x 63h in
WEIGHT WITHOUT BOX	46 Kg / 101 Lb
WEIGHT WITH BOX	48 Kg / 106 Lb
MAX PALLET WEIGHT	210 Kg / 463 Kg

CONFIGURATION	DIAMETER	MAX PRESSURE (bar / psi)	MATERIAL	MAX TEMPERATURE (°C / °F)	MAX HOSE LENGTH (m / ft)	STANDARD CODE
WATER	1/4"	0-250 / 0-3626	AISI 304 (std*) FE	140 / 284 discontinuous use	200 / 656	AV EK 8000 S 380
	5/16"				180 / 590	
	3/8"				150 / 492	
	1/2" (std*)				120 / 394	

CREATE YOUR OWN PRODUCT CODE WITH YOUR CHOSEN FEATURES

	FAMILY	SERIES	DIAMETER (except standard)	PRESSURE (specify only if 400 bar/5800 psi, 600 bar/8700 psi, 1000 bar/14500 psi)	MATERIAL (except standard AISI 304)	CONFIGURATION (specify the configuration code only when stated)	ACCESSORIES (only KIT BK and HD)	DESIGN	COLOR
CODE EXAMPLE									
WRITE YOUR OWN CODE

CODE EXAMPLE:

YOUR PRODUCT CODE:.....

CREATE YOUR OWN PRODUCT CODE WITH YOUR CHOSEN FEATURES

	FAMILY	SERIES	DIAMETER (except standard)	PRESSURE (specify only if 400 bar/5800 psi, 600 bar/8700 psi, 1000 bar/14500 psi)	MATERIAL (except standard AISI 304)	CONFIGURATION (specify the configuration code only when stated)	ACCESSORIES (only KIT BK and HD)	DESIGN	COLOR
CODE EXAMPLE									
WRITE YOUR OWN CODE

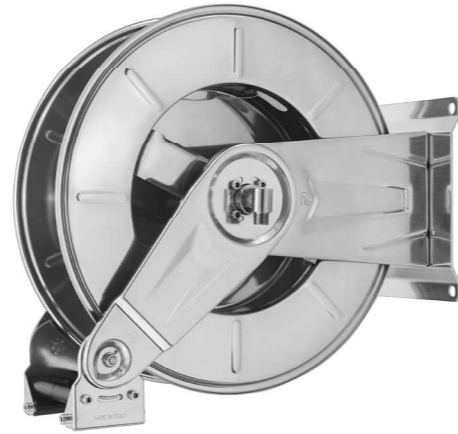
CODE EXAMPLE:

YOUR PRODUCT CODE:.....

HR EK 3502

with **REMOTE CONTROL**

E ELECTRIC **12** VOLT



*std: standard

MATERIALS	
AISI 304	Stainless steel
AISI 316	Stainless steel AISI 316
CA	Cataphoric treatment steel
FE	Powder coating steel

QUANTITY FOR PALLET	8
BOX DIMENSIONS	60 x 60 x 60h cm / 24 x 24 x 24 in
MAX PALLET DIMENSIONS	80 x 120 x 180h cm / 31 x 47 x 71h in
WEIGHT WITHOUT BOX	35 Kg / 77 Lb
WEIGHT WITH BOX	37 Kg / 81 Lb
MAX PALLET WEIGHT	314 Kg / 692 Lb

CONFIGURATION	DIAMETER	MAX PRESSURE (bar / psi)	MATERIAL	MAX TEMPERATURE (°C / °F)	MAX HOSE LENGTH (m / ft)	STANDARD CODE
WATER	3/4" (std*)	0-100 / 0-1450	AISI 304 (std*) FE	100 / 212	25 / 82	HR EK 3502
	1"				15 / 49	

HR EK 3502 24

with **REMOTE CONTROL**

E ELECTRIC **24** VOLT



*std: standard

MATERIALS	
AISI 304	Stainless steel
AISI 316	Stainless steel AISI 316
CA	Cataphoric treatment steel
FE	Powder coating steel

QUANTITY FOR PALLET	8
BOX DIMENSIONS	60 x 60 x 60h cm / 24 x 24 x 24 in
MAX PALLET DIMENSIONS	80 x 120 x 180h cm / 31 x 47 x 71h in
WEIGHT WITHOUT BOX	35 Kg / 77 Lb
WEIGHT WITH BOX	37 Kg / 81 Lb
MAX PALLET WEIGHT	314 Kg / 692 Lb

CONFIGURATION	DIAMETER	MAX PRESSURE (bar / psi)	MATERIAL	MAX TEMPERATURE (°C / °F)	MAX HOSE LENGTH (m / ft)	STANDARD CODE
WATER	3/4" (std*)	0-100 / 0-1450	AISI 304 (std*) FE	100 / 212	25 / 82	HR EK 3502 24
	1"				15 / 49	

HR EK 3502 S

without **REMOTE CONTROL**

E ELECTRIC **12** VOLT



*std: standard

MATERIALS	
AISI 304	Stainless steel
AISI 316	Stainless steel AISI 316
CA	Cataphoric treatment steel
FE	Powder coating steel

QUANTITY FOR PALLET	8
BOX DIMENSIONS	60 x 60 x 60h cm / 24 x 24 x 24 in
MAX PALLET DIMENSIONS	80 x 120 x 180h cm / 31 x 47 x 71h in
WEIGHT WITHOUT BOX	35 Kg / 77 Lb
WEIGHT WITH BOX	37 Kg / 81 Lb
MAX PALLET WEIGHT	314 Kg / 692 Lb

CONFIGURATION	DIAMETER	MAX PRESSURE (bar / psi)	MATERIAL	MAX TEMPERATURE (°C / °F)	MAX HOSE LENGTH (m / ft)	STANDARD CODE
WATER	3/4" (std*)	0-100 / 0-1450	AISI 304 (std*) FE	100 / 212	25 / 82	HR EK 3502
	1"				15 / 49	

HR EK 3502 S 24

without **REMOTE CONTROL**

E ELECTRIC **24** VOLT



*std: standard

MATERIALS	
AISI 304	Stainless steel
AISI 316	Stainless steel AISI 316
CA	Cataphoric treatment steel
FE	Powder coating steel

QUANTITY FOR PALLET	8
BOX DIMENSIONS	60 x 60 x 60h cm / 24 x 24 x 24 in
MAX PALLET DIMENSIONS	80 x 120 x 180h cm / 31 x 47 x 71h in
WEIGHT WITHOUT BOX	35 Kg / 77 Lb
WEIGHT WITH BOX	37 Kg / 81 Lb
MAX PALLET WEIGHT	314 Kg / 692 Lb

CONFIGURATION	DIAMETER	MAX PRESSURE (bar / psi)	MATERIAL	MAX TEMPERATURE (°C / °F)	MAX HOSE LENGTH (m / ft)	STANDARD CODE
WATER	3/4" (std*)	0-100 / 0-1450	AISI 304 (std*) FE	100 / 212	25 / 82	HR EK 3502 S 24
	1"				15 / 49	

CREATE YOUR OWN PRODUCT CODE WITH YOUR CHOSEN FEATURES

	FAMILY	SERIES	DIAMETER (except standard)	PRESSURE (specify only if 400 bar/5800 psi, 600 bar/8700 psi, 1000 bar/14500 psi)	MATERIAL (except standard AISI 304)	CONFIGURATION (specify the configuration code only when stated)	ACCESSORIES (only KIT BK and HD)	DESIGN	COLOR
CODE EXAMPLE									
WRITE YOUR OWN CODE

CODE EXAMPLE:

YOUR PRODUCT CODE:.....

CREATE YOUR OWN PRODUCT CODE WITH YOUR CHOSEN FEATURES

	FAMILY	SERIES	DIAMETER (except standard)	PRESSURE (specify only if 400 bar/5800 psi, 600 bar/8700 psi, 1000 bar/14500 psi)	MATERIAL (except standard AISI 304)	CONFIGURATION (specify the configuration code only when stated)	ACCESSORIES (only KIT BK and HD)	DESIGN	COLOR
CODE EXAMPLE									
WRITE YOUR OWN CODE

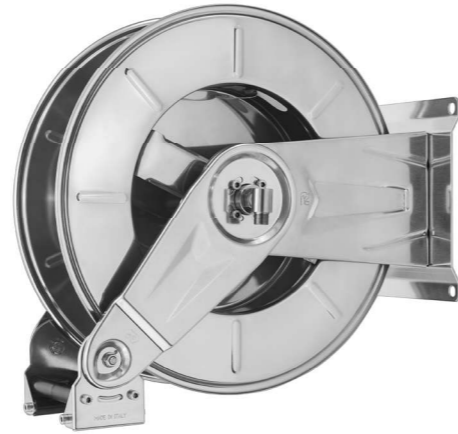
CODE EXAMPLE:

YOUR PRODUCT CODE:.....

HR EK 3502 230

with **REMOTE CONTROL**

ELECTRIC **230 VOLT**



*std: standard

MATERIALS	
AISI 304	Stainless steel
AISI 316	Stainless steel AISI 316
CA	Cataphoric treatment steel
FE	Powder coating steel

QUANTITY FOR PALLET	8
BOX DIMENSIONS	60 x 60 x 60h cm / 24 x 24 x 24 in
MAX PALLET DIMENSIONS	80 x 120 x 180h cm / 31 x 47 x 71h in
WEIGHT WITHOUT BOX	35 Kg / 77 Lb
WEIGHT WITH BOX	37 Kg / 81 Lb
MAX PALLET WEIGHT	314 Kg / 692 Lb

CONFIGURATION	DIAMETER	MAX PRESSURE (bar / psi)	MATERIAL	MAX TEMPERATURE (°C / °F)	MAX HOSE LENGTH (m / ft)	STANDARD CODE
WATER	3/4" (std*)	0-100 / 0-1450	AISI 304 (std*) FE	100 / 212	25 / 82	HR EK 3502 230
	1"				15 / 49	

HR EK 3502 380

with **REMOTE CONTROL**

ELECTRIC **380 VOLT**



*std: standard

MATERIALS	
AISI 304	Stainless steel
AISI 316	Stainless steel AISI 316
CA	Cataphoric treatment steel
FE	Powder coating steel

QUANTITY FOR PALLET	8
BOX DIMENSIONS	60 x 60 x 60h cm / 24 x 24 x 24 in
MAX PALLET DIMENSIONS	80 x 120 x 180h cm / 31 x 47 x 71h in
WEIGHT WITHOUT BOX	35 Kg / 77 Lb
WEIGHT WITH BOX	37 Kg / 81 Lb
MAX PALLET WEIGHT	314 Kg / 692 Lb

CONFIGURATION	DIAMETER	MAX PRESSURE (bar / psi)	MATERIAL	MAX TEMPERATURE (°C / °F)	MAX HOSE LENGTH (m / ft)	STANDARD CODE
WATER	3/4" (std*)	0-100 / 0-1450	AISI 304 (std*) FE	100 / 212	25 / 82	HR EK 3502 380
	1"				15 / 49	

HR EK 3502 S 230

without **REMOTE CONTROL**

ELECTRIC **230 VOLT**



*std: standard

MATERIALS	
AISI 304	Stainless steel
AISI 316	Stainless steel AISI 316
CA	Cataphoric treatment steel
FE	Powder coating steel

QUANTITY FOR PALLET	8
BOX DIMENSIONS	60 x 60 x 60h cm / 24 x 24 x 24 in
MAX PALLET DIMENSIONS	80 x 120 x 180h cm / 31 x 47 x 71h in
WEIGHT WITHOUT BOX	35 Kg / 77 Lb
WEIGHT WITH BOX	37 Kg / 81 Lb
MAX PALLET WEIGHT	314 Kg / 692 Lb

CONFIGURATION	DIAMETER	MAX PRESSURE (bar / psi)	MATERIAL	MAX TEMPERATURE (°C / °F)	MAX HOSE LENGTH (m / ft)	STANDARD CODE
WATER	3/4" (std*)	0-100 / 0-1450	AISI 304 (std*) FE	100 / 212	25 / 82	HR EK 3502 S 230
	1"				15 / 49	

HR EK 3502 S 380

without **REMOTE CONTROL**

ELECTRIC **380 VOLT**



*std: standard

MATERIALS	
AISI 304	Stainless steel
AISI 316	Stainless steel AISI 316
CA	Cataphoric treatment steel
FE	Powder coating steel

QUANTITY FOR PALLET	8
BOX DIMENSIONS	60 x 60 x 60h cm / 24 x 24 x 24 in
MAX PALLET DIMENSIONS	80 x 120 x 180h cm / 31 x 47 x 71h in
WEIGHT WITHOUT BOX	35 Kg / 77 Lb
WEIGHT WITH BOX	37 Kg / 81 Lb
MAX PALLET WEIGHT	314 Kg / 692 Lb

CONFIGURATION	DIAMETER	MAX PRESSURE (bar / psi)	MATERIAL	MAX TEMPERATURE (°C / °F)	MAX HOSE LENGTH (m / ft)	STANDARD CODE
WATER	3/4" (std*)	0-100 / 0-1450	AISI 304 (std*) FE	100 / 212	25 / 82	HR EK 3502 S 380
	1"				15 / 49	

CREATE YOUR OWN PRODUCT CODE WITH YOUR CHOSEN FEATURES

	FAMILY	SERIES	DIAMETER (except standard)	PRESSURE (specify only if 400 bar/5800 psi, 600 bar/8700 psi, 1000 bar/14500 psi)	MATERIAL (except standard AISI 304)	CONFIGURATION (specify the configuration code only when stated)	ACCESSORIES (only KIT BK and HD)	DESIGN	COLOR
CODE EXAMPLE									
WRITE YOUR OWN CODE

CODE EXAMPLE:

YOUR PRODUCT CODE:.....

CREATE YOUR OWN PRODUCT CODE WITH YOUR CHOSEN FEATURES

	FAMILY	SERIES	DIAMETER (except standard)	PRESSURE (specify only if 400 bar/5800 psi, 600 bar/8700 psi, 1000 bar/14500 psi)	MATERIAL (except standard AISI 304)	CONFIGURATION (specify the configuration code only when stated)	ACCESSORIES (only KIT BK and HD)	DESIGN	COLOR
CODE EXAMPLE									
WRITE YOUR OWN CODE

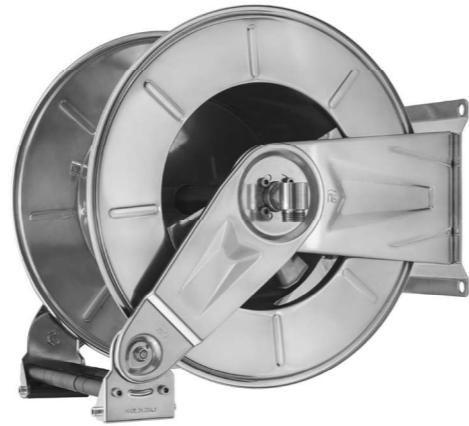
CODE EXAMPLE:

YOUR PRODUCT CODE:.....

HR EK 2

with **REMOTE CONTROL**

E ELECTRIC **12** VOLT



*std: standard

MATERIALS	
AISI 304	Stainless steel
AISI 316	Stainless steel AISI 316
CA	Cataphoric treatment steel
FE	Powder coating steel

QUANTITY FOR PALLET	4
BOX DIMENSIONS	60 x 80 x 70h cm / 24 x 31 x 27h in
MAX PALLET DIMENSIONS	60 x 120 x 160h cm / 24 x 47 x 63h in
WEIGHT WITHOUT BOX	39 Kg / 86 Lb
WEIGHT WITH BOX	41 Kg / 90 Lb
MAX PALLET WEIGHT	182 Kg / 401 Lb

CONFIGURATION	DIAMETER	MAX PRESSURE (bar / psi)	MATERIAL	MAX TEMPERATURE (°C / °F)	MAX HOSE LENGTH (m / ft)	STANDARD CODE
WATER	3/4" (std*)	0-100 / 0-1450	AISI 304 (std*) FE	100 / 212	50 / 164	HR EK 2
	1"				35 / 115	

HR EK 2 24

with **REMOTE CONTROL**

E ELECTRIC **24** VOLT



*std: standard

MATERIALS	
AISI 304	Stainless steel
AISI 316	Stainless steel AISI 316
CA	Cataphoric treatment steel
FE	Powder coating steel

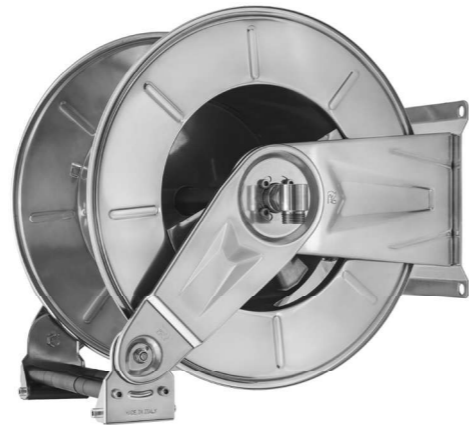
QUANTITY FOR PALLET	4
BOX DIMENSIONS	60 x 80 x 70h cm / 24 x 31 x 27h in
MAX PALLET DIMENSIONS	60 x 120 x 160h cm / 24 x 47 x 63h in
WEIGHT WITHOUT BOX	39 Kg / 86 Lb
WEIGHT WITH BOX	41 Kg / 90 Lb
MAX PALLET WEIGHT	182 Kg / 401 Lb

CONFIGURATION	DIAMETER	MAX PRESSURE (bar / psi)	MATERIAL	MAX TEMPERATURE (°C / °F)	MAX HOSE LENGTH (m / ft)	STANDARD CODE
WATER	3/4" (std*)	0-100 / 0-1450	AISI 304 (std*) FE	100 / 212	50 / 164	HR EK 2 24
	1"				35 / 115	

HR EK 2 S

without **REMOTE CONTROL**

E ELECTRIC **12** VOLT



*std: standard

MATERIALS	
AISI 304	Stainless steel
AISI 316	Stainless steel AISI 316
CA	Cataphoric treatment steel
FE	Powder coating steel

QUANTITY FOR PALLET	4
BOX DIMENSIONS	60 x 80 x 70h cm / 24 x 31 x 27h in
MAX PALLET DIMENSIONS	60 x 120 x 160h cm / 24 x 47 x 63h in
WEIGHT WITHOUT BOX	39 Kg / 86 Lb
WEIGHT WITH BOX	41 Kg / 90 Lb
MAX PALLET WEIGHT	182 Kg / 401 Lb

CONFIGURATION	DIAMETER	MAX PRESSURE (bar / psi)	MATERIAL	MAX TEMPERATURE (°C / °F)	MAX HOSE LENGTH (m / ft)	STANDARD CODE
WATER	3/4" (std*)	0-100 / 0-1450	AISI 304 (std*) FE	100 / 212	50 / 164	HR EK 2 S
	1"				35 / 115	

HR EK 2 S 24

without **REMOTE CONTROL**

E ELECTRIC **24** VOLT



*std: standard

MATERIALS	
AISI 304	Stainless steel
AISI 316	Stainless steel AISI 316
CA	Cataphoric treatment steel
FE	Powder coating steel

QUANTITY FOR PALLET	4
BOX DIMENSIONS	60 x 80 x 70h cm / 24 x 31 x 27h in
MAX PALLET DIMENSIONS	60 x 120 x 160h cm / 24 x 47 x 63h in
WEIGHT WITHOUT BOX	39 Kg / 86 Lb
WEIGHT WITH BOX	41 Kg / 90 Lb
MAX PALLET WEIGHT	182 Kg / 401 Lb

CONFIGURATION	DIAMETER	MAX PRESSURE (bar / psi)	MATERIAL	MAX TEMPERATURE (°C / °F)	MAX HOSE LENGTH (m / ft)	STANDARD CODE
WATER	3/4" (std*)	0-100 / 0-1450	AISI 304 (std*) FE	100 / 212	50 / 164	HR EK 2 S 24
	1"				35 / 115	

CREATE YOUR OWN PRODUCT CODE WITH YOUR CHOSEN FEATURES

	FAMILY	SERIES	DIAMETER (except standard)	PRESSURE (specify only if 400 bar/5800 psi, 600 bar/8700 psi, 1000 bar/14500 psi)	MATERIAL (except standard AISI 304)	CONFIGURATION (specify the configuration code only when stated)	ACCESSORIES (only KIT BK and HD)	DESIGN	COLOR
CODE EXAMPLE									
WRITE YOUR OWN CODE

CODE EXAMPLE:

YOUR PRODUCT CODE:.....

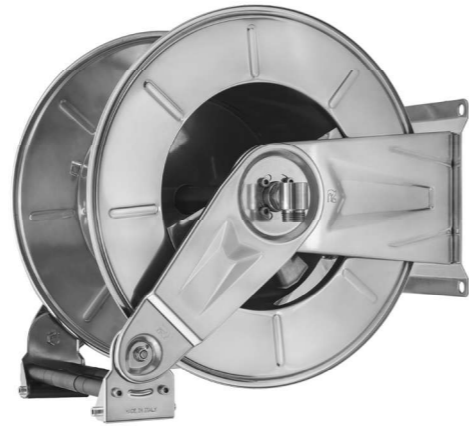
CREATE YOUR OWN PRODUCT CODE WITH YOUR CHOSEN FEATURES

	FAMILY	SERIES	DIAMETER (except standard)	PRESSURE (specify only if 400 bar/5800 psi, 600 bar/8700 psi, 1000 bar/14500 psi)	MATERIAL (except standard AISI 304)	CONFIGURATION (specify the configuration code only when stated)	ACCESSORIES (only KIT BK and HD)	DESIGN	COLOR
CODE EXAMPLE									
WRITE YOUR OWN CODE

CODE EXAMPLE:

YOUR PRODUCT CODE:.....

HR EK 2 230



*std: standard

MATERIALS	
AISI 304	Stainless steel
AISI 316	Stainless steel AISI 316
CA	Cataphoric treatment steel
FE	Powder coating steel

QUANTITY FOR PALLET	4
BOX DIMENSIONS	60 x 80 x 70h cm / 24 x 31 x 27h in
MAX PALLET DIMENSIONS	60 x 120 x 160h cm / 24 x 47 x 63h in
WEIGHT WITHOUT BOX	39 Kg / 86 Lb
WEIGHT WITH BOX	41 Kg / 90 Lb
MAX PALLET WEIGHT	182 Kg / 401 Lb

CONFIGURATION	DIAMETER	MAX PRESSURE (bar / psi)	MATERIAL	MAX TEMPERATURE (°C / °F)	MAX HOSE LENGTH (m / ft)	STANDARD CODE
WATER	3/4" (std*)	0-100 / 0-1450	AISI 304 (std*) FE	100 / 212	50 / 164	HR EK 2 230
	1"				35 / 115	

HR EK 2 380



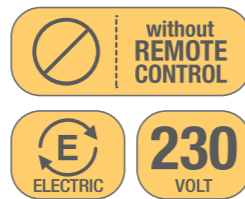
*std: standard

MATERIALS	
AISI 304	Stainless steel
AISI 316	Stainless steel AISI 316
CA	Cataphoric treatment steel
FE	Powder coating steel

QUANTITY FOR PALLET	4
BOX DIMENSIONS	60 x 80 x 70h cm / 24 x 31 x 27h in
MAX PALLET DIMENSIONS	60 x 120 x 160h cm / 24 x 47 x 63h in
WEIGHT WITHOUT BOX	39 Kg / 86 Lb
WEIGHT WITH BOX	41 Kg / 90 Lb
MAX PALLET WEIGHT	182 Kg / 401 Lb

CONFIGURATION	DIAMETER	MAX PRESSURE (bar / psi)	MATERIAL	MAX TEMPERATURE (°C / °F)	MAX HOSE LENGTH (m / ft)	STANDARD CODE
WATER	3/4" (std*)	0-100 / 0-1450	AISI 304 (std*) FE	100 / 212	50 / 164	HR EK 2 380
	1"				35 / 115	

HR EK 2 S 230



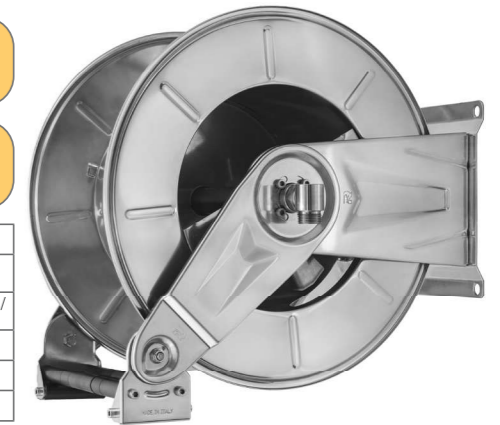
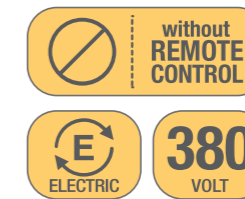
*std: standard

MATERIALS	
AISI 304	Stainless steel
AISI 316	Stainless steel AISI 316
CA	Cataphoric treatment steel
FE	Powder coating steel

QUANTITY FOR PALLET	4
BOX DIMENSIONS	60 x 80 x 70h cm / 24 x 31 x 27h in
MAX PALLET DIMENSIONS	60 x 120 x 160h cm / 24 x 47 x 63h in
WEIGHT WITHOUT BOX	39 Kg / 86 Lb
WEIGHT WITH BOX	41 Kg / 90 Lb
MAX PALLET WEIGHT	182 Kg / 401 Lb

CONFIGURATION	DIAMETER	MAX PRESSURE (bar / psi)	MATERIAL	MAX TEMPERATURE (°C / °F)	MAX HOSE LENGTH (m / ft)	STANDARD CODE
WATER	3/4" (std*)	0-100 / 0-1450	AISI 304 (std*) FE	100 / 212	50 / 164	HR EK 2 S 230
	1"				35 / 115	

HR EK 2 S 380



*std: standard

MATERIALS	
AISI 304	Stainless steel
AISI 316	Stainless steel AISI 316
CA	Cataphoric treatment steel
FE	Powder coating steel

QUANTITY FOR PALLET	4
BOX DIMENSIONS	60 x 80 x 70h cm / 24 x 31 x 27h in
MAX PALLET DIMENSIONS	60 x 120 x 160h cm / 24 x 47 x 63h in
WEIGHT WITHOUT BOX	39 Kg / 86 Lb
WEIGHT WITH BOX	41 Kg / 90 Lb
MAX PALLET WEIGHT	182 Kg / 401 Lb

CONFIGURATION	DIAMETER	MAX PRESSURE (bar / psi)	MATERIAL	MAX TEMPERATURE (°C / °F)	MAX HOSE LENGTH (m / ft)	STANDARD CODE
WATER	3/4" (std*)	0-100 / 0-1450	AISI 304 (std*) FE	100 / 212	50 / 164	HR EK 2 S 380
	1"				35 / 115	

CREATE YOUR OWN PRODUCT CODE WITH YOUR CHOSEN FEATURES

	FAMILY	SERIES	DIAMETER (except standard)	PRESSURE (specify only if 400 bar/5800 psi, 600 bar/8700 psi, 1000 bar/14500 psi)	MATERIAL (except standard AISI 304)	CONFIGURATION (specify the configuration code only when stated)	ACCESSORIES (only KIT BK and HD)	DESIGN	COLOR
CODE EXAMPLE									
WRITE YOUR OWN CODE

CODE EXAMPLE:

YOUR PRODUCT CODE:.....

CREATE YOUR OWN PRODUCT CODE WITH YOUR CHOSEN FEATURES

	FAMILY	SERIES	DIAMETER (except standard)	PRESSURE (specify only if 400 bar/5800 psi, 600 bar/8700 psi, 1000 bar/14500 psi)	MATERIAL (except standard AISI 304)	CONFIGURATION (specify the configuration code only when stated)	ACCESSORIES (only KIT BK and HD)	DESIGN	COLOR
CODE EXAMPLE									
WRITE YOUR OWN CODE

CODE EXAMPLE:

YOUR PRODUCT CODE:.....

AV EK 5

with **REMOTE CONTROL**

E ELECTRIC **12** VOLT



*std: standard

MATERIALS	
AISI 304	Stainless steel
AISI 316	Stainless steel AISI 316
CA	Cataphoric treatment steel
FE	Powder coating steel

QUANTITY FOR PALLET	4
BOX DIMENSIONS	60 x 60 x 90h cm / 24 x 24 x 35h in
MAX PALLET DIMENSIONS	80 x 120 x 200h cm / 31 x 47 x 79h in
WEIGHT WITHOUT BOX	38 Kg / 84 Lb
WEIGHT WITH BOX	40 Kg / 88 Lb
MAX PALLET WEIGHT	338 Kg / 745 Lb

CONFIGURATION	DIAMETER	MAX PRESSURE (bar / psi)	MATERIAL	MAX TEMPERATURE (°C / °F)	MAX HOSE LENGTH (m / ft)	STANDARD CODE
WATER	3/4" (std*)	0-100 / 0-1450	AISI 304 (std*) FE	100 / 212	50 / 164	AV EK 5
	1"				35 / 115	

AV EK 8001

with **REMOTE CONTROL**

E ELECTRIC **12** VOLT



*std: standard

MATERIALS	
AISI 304	Stainless steel
AISI 316	Stainless steel AISI 316
CA	Cataphoric treatment steel
FE	Powder coating steel

QUANTITY FOR PALLET	4
BOX DIMENSIONS	60 x 80 x 70h cm / 24 x 31 x 27h in
MAX PALLET DIMENSIONS	60 x 120 x 160h cm / 24 x 47 x 63h in
WEIGHT WITHOUT BOX	46 Kg / 101 Lb
WEIGHT WITH BOX	48 Kg / 106 Lb
MAX PALLET WEIGHT	210 Kg / 463 Kg

CONFIGURATION	DIAMETER	MAX PRESSURE (bar / psi)	MATERIAL	MAX TEMPERATURE (°C / °F)	MAX HOSE LENGTH (m / ft)	STANDARD CODE
WATER	3/4" (std*)	0-100 / 0-1450	AISI 304 (std*) FE	100 / 212	60 / 197	AV EK 8001
	1"				40 / 131	

AV EK 5 S

without **REMOTE CONTROL**

E ELECTRIC **12** VOLT



*std: standard

MATERIALS	
AISI 304	Stainless steel
AISI 316	Stainless steel AISI 316
CA	Cataphoric treatment steel
FE	Powder coating steel

QUANTITY FOR PALLET	4
BOX DIMENSIONS	60 x 60 x 90h cm / 24 x 24 x 35h in
MAX PALLET DIMENSIONS	80 x 120 x 200h cm / 31 x 47 x 79h in
WEIGHT WITHOUT BOX	38 Kg / 84 Lb
WEIGHT WITH BOX	40 Kg / 88 Lb
MAX PALLET WEIGHT	338 Kg / 745 Lb

CONFIGURATION	DIAMETER	MAX PRESSURE (bar / psi)	MATERIAL	MAX TEMPERATURE (°C / °F)	MAX HOSE LENGTH (m / ft)	STANDARD CODE
WATER	3/4" (std*)	0-100 / 0-1450	AISI 304 (std*) FE	100 / 212	50 / 164	AV EK 5 S
	1"				35 / 115	

AV EK 8001 S

without **REMOTE CONTROL**

E ELECTRIC **12** VOLT



*std: standard

MATERIALS	
AISI 304	Stainless steel
AISI 316	Stainless steel AISI 316
CA	Cataphoric treatment steel
FE	Powder coating steel

QUANTITY FOR PALLET	4
BOX DIMENSIONS	60 x 80 x 70h cm / 24 x 31 x 27h in
MAX PALLET DIMENSIONS	60 x 120 x 160h cm / 24 x 47 x 63h in
WEIGHT WITHOUT BOX	46 Kg / 101 Lb
WEIGHT WITH BOX	48 Kg / 106 Lb
MAX PALLET WEIGHT	210 Kg / 463 Kg

CONFIGURATION	DIAMETER	MAX PRESSURE (bar / psi)	MATERIAL	MAX TEMPERATURE (°C / °F)	MAX HOSE LENGTH (m / ft)	STANDARD CODE
WATER	3/4" (std*)	0-100 / 0-1450	AISI 304 (std*) FE	100 / 212	60 / 197	AV EK 8001 S
	1"				40 / 131	

CREATE YOUR OWN PRODUCT CODE WITH YOUR CHOSEN FEATURES

	FAMILY	SERIES	DIAMETER (except standard)	PRESSURE (specify only if 400 bar/5800 psi, 600 bar/8700 psi, 1000 bar/14500 psi)	MATERIAL (except standard AISI 304)	CONFIGURATION (specify the configuration code only when stated)	ACCESSORIES (only KIT BK and HD)	DESIGN	COLOR
CODE EXAMPLE	AV	EK 5							
WRITE YOUR OWN CODE

CODE EXAMPLE: AV EK 5

YOUR PRODUCT CODE:

CREATE YOUR OWN PRODUCT CODE WITH YOUR CHOSEN FEATURES

	FAMILY	SERIES	DIAMETER (except standard)	PRESSURE (specify only if 400 bar/5800 psi, 600 bar/8700 psi, 1000 bar/14500 psi)	MATERIAL (except standard AISI 304)	CONFIGURATION (specify the configuration code only when stated)	ACCESSORIES (only KIT BK and HD)	DESIGN	COLOR
CODE EXAMPLE									
WRITE YOUR OWN CODE

CODE EXAMPLE:

YOUR PRODUCT CODE:

AV EK 8001 24

with **REMOTE CONTROL**

ELECTRIC **24 VOLT**



*std: standard

MATERIALS	
AISI 304	Stainless steel
AISI 316	Stainless steel AISI 316
CA	Cataphoric treatment steel
FE	Powder coating steel

QUANTITY FOR PALLET	4
BOX DIMENSIONS	60 x 80 x 70h cm / 24 x 31 x 27h in
MAX PALLET DIMENSIONS	60 x 120 x 160h cm / 24 x 47 x 63h in
WEIGHT WITHOUT BOX	46 Kg / 101 Lb
WEIGHT WITH BOX	48 Kg / 106 Lb
MAX PALLET WEIGHT	210 Kg / 463 Kg

CONFIGURATION	DIAMETER	MAX PRESSURE (bar / psi)	MATERIAL	MAX TEMPERATURE (°C / °F)	MAX HOSE LENGTH (m / ft)	STANDARD CODE
WATER	3/4" (std*)	0-100 / 0-1450	AISI 304 (std*) FE	100 / 212	60 / 197	AV EK 8001 24
	1"				40 / 131	

AV EK 8001 230

with **REMOTE CONTROL**

ELECTRIC **230 VOLT**



*std: standard

MATERIALS	
AISI 304	Stainless steel
AISI 316	Stainless steel AISI 316
CA	Cataphoric treatment steel
FE	Powder coating steel

QUANTITY FOR PALLET	4
BOX DIMENSIONS	60 x 80 x 70h cm / 24 x 31 x 27h in
MAX PALLET DIMENSIONS	60 x 120 x 160h cm / 24 x 47 x 63h in
WEIGHT WITHOUT BOX	46 Kg / 101 Lb
WEIGHT WITH BOX	48 Kg / 106 Lb
MAX PALLET WEIGHT	210 Kg / 463 Kg

CONFIGURATION	DIAMETER	MAX PRESSURE (bar / psi)	MATERIAL	MAX TEMPERATURE (°C / °F)	MAX HOSE LENGTH (m / ft)	STANDARD CODE
WATER	3/4" (std*)	0-100 / 0-1450	AISI 304 (std*) FE	100 / 212	60 / 197	AV EK 8001 230
	1"				40 / 131	

AV EK 8001 S 24

without **REMOTE CONTROL**

ELECTRIC **24 VOLT**



*std: standard

MATERIALS	
AISI 304	Stainless steel
AISI 316	Stainless steel AISI 316
CA	Cataphoric treatment steel
FE	Powder coating steel

QUANTITY FOR PALLET	4
BOX DIMENSIONS	60 x 80 x 70h cm / 24 x 31 x 27h in
MAX PALLET DIMENSIONS	60 x 120 x 160h cm / 24 x 47 x 63h in
WEIGHT WITHOUT BOX	46 Kg / 101 Lb
WEIGHT WITH BOX	48 Kg / 106 Lb
MAX PALLET WEIGHT	210 Kg / 463 Kg

CONFIGURATION	DIAMETER	MAX PRESSURE (bar / psi)	MATERIAL	MAX TEMPERATURE (°C / °F)	MAX HOSE LENGTH (m / ft)	STANDARD CODE
WATER	3/4" (std*)	0-100 / 0-1450	AISI 304 (std*) FE	100 / 212	60 / 197	AV EK 8001 S 24
	1"				40 / 131	

AV EK 8001 S 230

without **REMOTE CONTROL**

ELECTRIC **230 VOLT**



*std: standard

MATERIALS	
AISI 304	Stainless steel
AISI 316	Stainless steel AISI 316
CA	Cataphoric treatment steel
FE	Powder coating steel

QUANTITY FOR PALLET	4
BOX DIMENSIONS	60 x 80 x 70h cm / 24 x 31 x 27h in
MAX PALLET DIMENSIONS	60 x 120 x 160h cm / 24 x 47 x 63h in
WEIGHT WITHOUT BOX	46 Kg / 101 Lb
WEIGHT WITH BOX	48 Kg / 106 Lb
MAX PALLET WEIGHT	210 Kg / 463 Kg

CONFIGURATION	DIAMETER	MAX PRESSURE (bar / psi)	MATERIAL	MAX TEMPERATURE (°C / °F)	MAX HOSE LENGTH (m / ft)	STANDARD CODE
WATER	3/4" (std*)	0-100 / 0-1450	AISI 304 (std*) FE	100 / 212	60 / 197	AV EK 8001 S 230
	1"				40 / 131	

CREATE YOUR OWN PRODUCT CODE WITH YOUR CHOSEN FEATURES

	FAMILY	SERIES	DIAMETER (except standard)	PRESSURE (specify only if 400 bar/5800 psi, 600 bar/8700 psi, 1000 bar/14500 psi)	MATERIAL (except standard AISI 304)	CONFIGURATION (specify the configuration code only when stated)	ACCESSORIES (only KIT BK and HD)	DESIGN	COLOR
CODE EXAMPLE									
WRITE YOUR OWN CODE

CODE EXAMPLE:

YOUR PRODUCT CODE:.....

CREATE YOUR OWN PRODUCT CODE WITH YOUR CHOSEN FEATURES

	FAMILY	SERIES	DIAMETER (except standard)	PRESSURE (specify only if 400 bar/5800 psi, 600 bar/8700 psi, 1000 bar/14500 psi)	MATERIAL (except standard AISI 304)	CONFIGURATION (specify the configuration code only when stated)	ACCESSORIES (only KIT BK and HD)	DESIGN	COLOR
CODE EXAMPLE									
WRITE YOUR OWN CODE

CODE EXAMPLE:

YOUR PRODUCT CODE:.....

AV EK 8001 380

with **REMOTE CONTROL**

ELECTRIC **380 VOLT**



*std: standard

MATERIALS	
AISI 304	Stainless steel
AISI 316	Stainless steel AISI 316
CA	Cataphoric treatment steel
FE	Powder coating steel

QUANTITY FOR PALLET	4
BOX DIMENSIONS	60 x 80 x 70h cm / 24 x 31 x 27h in
MAX PALLET DIMENSIONS	60 x 120 x 160h cm / 24 x 47 x 63h in
WEIGHT WITHOUT BOX	46 Kg / 101 Lb
WEIGHT WITH BOX	48 Kg / 106 Lb
MAX PALLET WEIGHT	210 Kg / 463 Kg

CONFIGURATION	DIAMETER	MAX PRESSURE (bar / psi)	MATERIAL	MAX TEMPERATURE (°C / °F)	MAX HOSE LENGTH (m / ft)	STANDARD CODE
WATER	3/4" (std*)	0-100 / 0-1450	AISI 304 (std*) FE	100 / 212	60 / 197	AV EK 8001 380
	1"				40 / 131	

AV EK 2091

with **REMOTE CONTROL**

ELECTRIC **12 VOLT**



*std: standard

MATERIALS	
AISI 304	Stainless steel
AISI 316	Stainless steel AISI 316
CA	Cataphoric treatment steel
FE	Powder coating steel

QUANTITY FOR PALLET	1
BOX DIMENSIONS	80 x 120 x 140h cm / 80 x 47 x 55h in
MAX PALLET DIMENSIONS	80 x 120 x 140h cm / 80 x 47 x 55h in
WEIGHT WITHOUT BOX	80 Kg / 176 Lb
WEIGHT WITH BOX	80 Kg / 176 Lb
MAX PALLET WEIGHT	98 Kg / 216 Lb

CONFIGURATION	DIAMETER	MAX PRESSURE (bar / psi)	MATERIAL	MAX TEMPERATURE (°C / °F)	MAX HOSE LENGTH (m / ft)	STANDARD CODE
WATER	1" (std*)	0-100 / 0-1450	AISI 304 (std*) FE	100 / 212	100 / 328	AV EK 2091

AV EK 8001 S 380

without **REMOTE CONTROL**

ELECTRIC **380 VOLT**



*std: standard

MATERIALS	
AISI 304	Stainless steel
AISI 316	Stainless steel AISI 316
CA	Cataphoric treatment steel
FE	Powder coating steel

QUANTITY FOR PALLET	4
BOX DIMENSIONS	60 x 80 x 70h cm / 24 x 31 x 27h in
MAX PALLET DIMENSIONS	60 x 120 x 160h cm / 24 x 47 x 63h in
WEIGHT WITHOUT BOX	46 Kg / 101 Lb
WEIGHT WITH BOX	48 Kg / 106 Lb
MAX PALLET WEIGHT	210 Kg / 463 Kg

CONFIGURATION	DIAMETER	MAX PRESSURE (bar / psi)	MATERIAL	MAX TEMPERATURE (°C / °F)	MAX HOSE LENGTH (m / ft)	STANDARD CODE
WATER	3/4" (std*)	0-100 / 0-1450	AISI 304 (std*) FE	100 / 212	60 / 197	AV EK 8001 S 380
	1"				40 / 131	

AV EK 2091 S

without **REMOTE CONTROL**

ELECTRIC **12 VOLT**



*std: standard

MATERIALS	
AISI 304	Stainless steel
AISI 316	Stainless steel AISI 316
CA	Cataphoric treatment steel
FE	Powder coating steel

QUANTITY FOR PALLET	1
BOX DIMENSIONS	80 x 120 x 140h cm / 80 x 47 x 55h in
MAX PALLET DIMENSIONS	80 x 120 x 140h cm / 80 x 47 x 55h in
WEIGHT WITHOUT BOX	80 Kg / 176 Lb
WEIGHT WITH BOX	80 Kg / 176 Lb
MAX PALLET WEIGHT	98 Kg / 216 Lb

CONFIGURATION	DIAMETER	MAX PRESSURE (bar / psi)	MATERIAL	MAX TEMPERATURE (°C / °F)	MAX HOSE LENGTH (m / ft)	STANDARD CODE
WATER	1" (std*)	0-100 / 0-1450	AISI 304 (std*) FE	100 / 212	100 / 328	AV EK 2091 S

CREATE YOUR OWN PRODUCT CODE WITH YOUR CHOSEN FEATURES

	FAMILY	SERIES	DIAMETER (except standard)	PRESSURE (specify only if 400 bar/5800 psi, 600 bar/8700 psi, 1000 bar/14500 psi)	MATERIAL (except standard AISI 304)	CONFIGURATION (specify the configuration code only when stated)	ACCESSORIES (only KIT BK and HD)	DESIGN	COLOR
CODE EXAMPLE									
WRITE YOUR OWN CODE

CODE EXAMPLE:

YOUR PRODUCT CODE:.....

CREATE YOUR OWN PRODUCT CODE WITH YOUR CHOSEN FEATURES

	FAMILY	SERIES	DIAMETER (except standard)	PRESSURE (specify only if 400 bar/5800 psi, 600 bar/8700 psi, 1000 bar/14500 psi)	MATERIAL (except standard AISI 304)	CONFIGURATION (specify the configuration code only when stated)	ACCESSORIES (only KIT BK and HD)	DESIGN	COLOR
CODE EXAMPLE									
WRITE YOUR OWN CODE

CODE EXAMPLE:

YOUR PRODUCT CODE:.....

AV EK 2091 24



*std: standard

MATERIALS	
AISI 304	Stainless steel
AISI 316	Stainless steel AISI 316
CA	Cataphoric treatment steel
FE	Powder coating steel

QUANTITY FOR PALLET	1
BOX DIMENSIONS	80 x 120 x 140h cm / 80 x 47 x 55h in
MAX PALLET DIMENSIONS	80 x 120 x 140h cm / 80 x 47 x 55h in
WEIGHT WITHOUT BOX	80 Kg / 176 Lb
WEIGHT WITH BOX	80 Kg / 176 Lb
MAX PALLET WEIGHT	98 Kg / 216 Lb

CONFIGURATION	DIAMETER	MAX PRESSURE (bar / psi)	MATERIAL	MAX TEMPERATURE (°C / °F)	MAX HOSE LENGTH (m / ft)	STANDARD CODE
WATER	1" (std*)	0-100 / 0-1450	AISI 304 (std*) FE	100 / 212	100 / 328	AV EK 2091 24

AV EK 2091 230



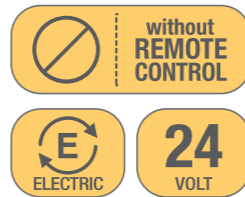
*std: standard

MATERIALS	
AISI 304	Stainless steel
AISI 316	Stainless steel AISI 316
CA	Cataphoric treatment steel
FE	Powder coating steel

QUANTITY FOR PALLET	1
BOX DIMENSIONS	80 x 120 x 140h cm / 80 x 47 x 55h in
MAX PALLET DIMENSIONS	80 x 120 x 140h cm / 80 x 47 x 55h in
WEIGHT WITHOUT BOX	80 Kg / 176 Lb
WEIGHT WITH BOX	80 Kg / 176 Lb
MAX PALLET WEIGHT	98 Kg / 216 Lb

CONFIGURATION	DIAMETER	MAX PRESSURE (bar / psi)	MATERIAL	MAX TEMPERATURE (°C / °F)	MAX HOSE LENGTH (m / ft)	STANDARD CODE
WATER	1" (std*)	0-100 / 0-1450	AISI 304 (std*) FE	100 / 212	100 / 328	AV EK 2091 230

AV EK 2091 S 24



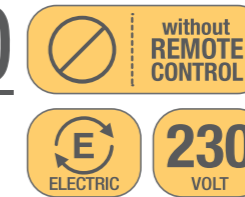
*std: standard

MATERIALS	
AISI 304	Stainless steel
AISI 316	Stainless steel AISI 316
CA	Cataphoric treatment steel
FE	Powder coating steel

QUANTITY FOR PALLET	1
BOX DIMENSIONS	80 x 120 x 140h cm / 80 x 47 x 55h in
MAX PALLET DIMENSIONS	80 x 120 x 140h cm / 80 x 47 x 55h in
WEIGHT WITHOUT BOX	80 Kg / 176 Lb
WEIGHT WITH BOX	80 Kg / 176 Lb
MAX PALLET WEIGHT	98 Kg / 216 Lb

CONFIGURATION	DIAMETER	MAX PRESSURE (bar / psi)	MATERIAL	MAX TEMPERATURE (°C / °F)	MAX HOSE LENGTH (m / ft)	STANDARD CODE
WATER	1" (std*)	0-100 / 0-1450	AISI 304 (std*) FE	100 / 212	100 / 328	AV EK 2091 S 24

AV EK 2091 S 230



*std: standard

MATERIALS	
AISI 304	Stainless steel
AISI 316	Stainless steel AISI 316
CA	Cataphoric treatment steel
FE	Powder coating steel

QUANTITY FOR PALLET	1
BOX DIMENSIONS	80 x 120 x 140h cm / 80 x 47 x 55h in
MAX PALLET DIMENSIONS	80 x 120 x 140h cm / 80 x 47 x 55h in
WEIGHT WITHOUT BOX	80 Kg / 176 Lb
WEIGHT WITH BOX	80 Kg / 176 Lb
MAX PALLET WEIGHT	98 Kg / 216 Lb

CONFIGURATION	DIAMETER	MAX PRESSURE (bar / psi)	MATERIAL	MAX TEMPERATURE (°C / °F)	MAX HOSE LENGTH (m / ft)	STANDARD CODE
WATER	1" (std*)	0-100 / 0-1450	AISI 304 (std*) FE	100 / 212	100 / 328	AV EK 2091 S 230

CREATE YOUR OWN PRODUCT CODE WITH YOUR CHOSEN FEATURES

	FAMILY	SERIES	DIAMETER (except standard)	PRESSURE (specify only if 400 bar/5800 psi, 600 bar/8700 psi, 1000 bar/14500 psi)	MATERIAL (except standard AISI 304)	CONFIGURATION (specify the configuration code only when stated)	ACCESSORIES (only KIT BK and HD)	DESIGN	COLOR
CODE EXAMPLE									
WRITE YOUR OWN CODE

CODE EXAMPLE:

YOUR PRODUCT CODE:.....

CREATE YOUR OWN PRODUCT CODE WITH YOUR CHOSEN FEATURES

	FAMILY	SERIES	DIAMETER (except standard)	PRESSURE (specify only if 400 bar/5800 psi, 600 bar/8700 psi, 1000 bar/14500 psi)	MATERIAL (except standard AISI 304)	CONFIGURATION (specify the configuration code only when stated)	ACCESSORIES (only KIT BK and HD)	DESIGN	COLOR
CODE EXAMPLE									
WRITE YOUR OWN CODE

CODE EXAMPLE:

YOUR PRODUCT CODE:.....

AV EK 2091 380

with **REMOTE CONTROL**

ELECTRIC **380 VOLT**



*std: standard

MATERIALS	
AISI 304	Stainless steel
AISI 316	Stainless steel AISI 316
CA	Cataphoric treatment steel
FE	Powder coating steel

QUANTITY FOR PALLET	1
BOX DIMENSIONS	80 x 120 x 140h cm / 80 x 47 x 55h in
MAX PALLET DIMENSIONS	80 x 120 x 140h cm / 80 x 47 x 55h in
WEIGHT WITHOUT BOX	80 Kg / 176 Lb
WEIGHT WITH BOX	80 Kg / 176 Lb
MAX PALLET WEIGHT	98 Kg / 216 Lb

CONFIGURATION	DIAMETER	MAX PRESSURE (bar / psi)	MATERIAL	MAX TEMPERATURE (°C / °F)	MAX HOSE LENGTH (m / ft)	STANDARD CODE
WATER	1" (std*)	0-100 / 0-1450	AISI 304 (std*) FE	100 / 212	100 / 328	AV EK 2091 380

AV EK 2095

with **REMOTE CONTROL**

ELECTRIC **12 VOLT**



*std: standard

MATERIALS	
AISI 304	Stainless steel
AISI 316	Stainless steel AISI 316
CA	Cataphoric treatment steel
FE	Powder coating steel

QUANTITY FOR PALLET	1
BOX DIMENSIONS	80 x 120 x 140h cm / 80 x 47 x 55h in
MAX PALLET DIMENSIONS	80 x 120 x 140h cm / 80 x 47 x 55h in
WEIGHT WITHOUT BOX	80 Kg / 176 Lb
WEIGHT WITH BOX	80 Kg / 176 Lb
MAX PALLET WEIGHT	98 Kg / 216 Lb

CONFIGURATION	DIAMETER	MAX PRESSURE (bar / psi)	MATERIAL	MAX TEMPERATURE (°C / °F)	MAX HOSE LENGTH (m / ft)	STANDARD CODE
WATER	1 1/4" (std*)	10 / 145	AISI 304 (std*) FE	100 / 212	60 / 197	AV EK 2095

AV EK 2091 S 380

without **REMOTE CONTROL**

ELECTRIC **380 VOLT**



*std: standard

MATERIALS	
AISI 304	Stainless steel
AISI 316	Stainless steel AISI 316
CA	Cataphoric treatment steel
FE	Powder coating steel

QUANTITY FOR PALLET	1
BOX DIMENSIONS	80 x 120 x 140h cm / 80 x 47 x 55h in
MAX PALLET DIMENSIONS	80 x 120 x 140h cm / 80 x 47 x 55h in
WEIGHT WITHOUT BOX	80 Kg / 176 Lb
WEIGHT WITH BOX	80 Kg / 176 Lb
MAX PALLET WEIGHT	98 Kg / 216 Lb

CONFIGURATION	DIAMETER	MAX PRESSURE (bar / psi)	MATERIAL	MAX TEMPERATURE (°C / °F)	MAX HOSE LENGTH (m / ft)	STANDARD CODE
WATER	1" (std*)	0-100 / 0-1450	AISI 304 (std*) FE	100 / 212	100 / 328	AV EK 2091 S 380

AV EK 2095 S

without **REMOTE CONTROL**

ELECTRIC **12 VOLT**



*std: standard

MATERIALS	
AISI 304	Stainless steel
AISI 316	Stainless steel AISI 316
CA	Cataphoric treatment steel
FE	Powder coating steel

QUANTITY FOR PALLET	1
BOX DIMENSIONS	80 x 120 x 140h cm / 80 x 47 x 55h in
MAX PALLET DIMENSIONS	80 x 120 x 140h cm / 80 x 47 x 55h in
WEIGHT WITHOUT BOX	80 Kg / 176 Lb
WEIGHT WITH BOX	80 Kg / 176 Lb
MAX PALLET WEIGHT	98 Kg / 216 Lb

CONFIGURATION	DIAMETER	MAX PRESSURE (bar / psi)	MATERIAL	MAX TEMPERATURE (°C / °F)	MAX HOSE LENGTH (m / ft)	STANDARD CODE
WATER	1 1/4" (std*)	10 / 145	AISI 304 (std*) FE	100 / 212	60 / 197	AV EK 2095 S

CREATE YOUR OWN PRODUCT CODE WITH YOUR CHOSEN FEATURES

	FAMILY	SERIES	DIAMETER (except standard)	PRESSURE (specify only if 400 bar/5800 psi, 600 bar/8700 psi, 1000 bar/14500 psi)	MATERIAL (except standard AISI 304)	CONFIGURATION (specify the configuration code only when stated)	ACCESSORIES (only KIT BK and HD)	DESIGN	COLOR
CODE EXAMPLE									
WRITE YOUR OWN CODE

CODE EXAMPLE:

YOUR PRODUCT CODE:.....

CREATE YOUR OWN PRODUCT CODE WITH YOUR CHOSEN FEATURES

	FAMILY	SERIES	DIAMETER (except standard)	PRESSURE (specify only if 400 bar/5800 psi, 600 bar/8700 psi, 1000 bar/14500 psi)	MATERIAL (except standard AISI 304)	CONFIGURATION (specify the configuration code only when stated)	ACCESSORIES (only KIT BK and HD)	DESIGN	COLOR
CODE EXAMPLE									
WRITE YOUR OWN CODE

CODE EXAMPLE:

YOUR PRODUCT CODE:.....

AV EK 2095 24

with **REMOTE CONTROL**

E ELECTRIC **24** VOLT



*std: standard

MATERIALS	
AISI 304	Stainless steel
AISI 316	Stainless steel AISI 316
CA	Cataphoric treatment steel
FE	Powder coating steel

QUANTITY FOR PALLET	1
BOX DIMENSIONS	80 x 120 x 140h cm / 80 x 47 x 55h in
MAX PALLET DIMENSIONS	80 x 120 x 140h cm / 80 x 47 x 55h in
WEIGHT WITHOUT BOX	80 Kg / 176 Lb
WEIGHT WITH BOX	80 Kg / 176 Lb
MAX PALLET WEIGHT	98 Kg / 216 Lb

CONFIGURATION	DIAMETER	MAX PRESSURE (bar / psi)	MATERIAL	MAX TEMPERATURE (°C / °F)	MAX HOSE LENGTH (m / ft)	STANDARD CODE
WATER	1"¼ (std*)	10 / 145	AISI 304 (std*) FE	100 / 212	60 / 197	AV EK 2095 24

AV EK 2095 230

with **REMOTE CONTROL**

E ELECTRIC **230** VOLT



*std: standard

MATERIALS	
AISI 304	Stainless steel
AISI 316	Stainless steel AISI 316
CA	Cataphoric treatment steel
FE	Powder coating steel

QUANTITY FOR PALLET	1
BOX DIMENSIONS	80 x 120 x 140h cm / 80 x 47 x 55h in
MAX PALLET DIMENSIONS	80 x 120 x 140h cm / 80 x 47 x 55h in
WEIGHT WITHOUT BOX	80 Kg / 176 Lb
WEIGHT WITH BOX	80 Kg / 176 Lb
MAX PALLET WEIGHT	98 Kg / 216 Lb

CONFIGURATION	DIAMETER	MAX PRESSURE (bar / psi)	MATERIAL	MAX TEMPERATURE (°C / °F)	MAX HOSE LENGTH (m / ft)	STANDARD CODE
WATER	1"¼ (std*)	10 / 145	AISI 304 (std*) FE	100 / 212	60 / 197	AV EK 2095 230

AV EK 2095 S 24

without **REMOTE CONTROL**

E ELECTRIC **24** VOLT



*std: standard

MATERIALS	
AISI 304	Stainless steel
AISI 316	Stainless steel AISI 316
CA	Cataphoric treatment steel
FE	Powder coating steel

QUANTITY FOR PALLET	1
BOX DIMENSIONS	80 x 120 x 140h cm / 80 x 47 x 55h in
MAX PALLET DIMENSIONS	80 x 120 x 140h cm / 80 x 47 x 55h in
WEIGHT WITHOUT BOX	80 Kg / 176 Lb
WEIGHT WITH BOX	80 Kg / 176 Lb
MAX PALLET WEIGHT	98 Kg / 216 Lb

CONFIGURATION	DIAMETER	MAX PRESSURE (bar / psi)	MATERIAL	MAX TEMPERATURE (°C / °F)	MAX HOSE LENGTH (m / ft)	STANDARD CODE
WATER	1"¼ (std*)	10 / 145	AISI 304 (std*) FE	100 / 212	60 / 197	AV EK 2095 S 24

AV EK 2095 S 230

without **REMOTE CONTROL**

E ELECTRIC **230** VOLT



*std: standard

MATERIALS	
AISI 304	Stainless steel
AISI 316	Stainless steel AISI 316
CA	Cataphoric treatment steel
FE	Powder coating steel

QUANTITY FOR PALLET	1
BOX DIMENSIONS	80 x 120 x 140h cm / 80 x 47 x 55h in
MAX PALLET DIMENSIONS	80 x 120 x 140h cm / 80 x 47 x 55h in
WEIGHT WITHOUT BOX	80 Kg / 176 Lb
WEIGHT WITH BOX	80 Kg / 176 Lb
MAX PALLET WEIGHT	98 Kg / 216 Lb

CONFIGURATION	DIAMETER	MAX PRESSURE (bar / psi)	MATERIAL	MAX TEMPERATURE (°C / °F)	MAX HOSE LENGTH (m / ft)	STANDARD CODE
WATER	1"¼ (std*)	10 / 145	AISI 304 (std*) FE	100 / 212	60 / 197	AV EK 2095 S 230

CREATE YOUR OWN PRODUCT CODE WITH YOUR CHOSEN FEATURES

	FAMILY	SERIES	DIAMETER (except standard)	PRESSURE (specify only if 400 bar/5800 psi, 600 bar/8700 psi, 1000 bar/14500 psi)	MATERIAL (except standard AISI 304)	CONFIGURATION (specify the configuration code only when stated)	ACCESSORIES (only KIT BK and HD)	DESIGN	COLOR
CODE EXAMPLE									
WRITE YOUR OWN CODE

CODE EXAMPLE:

YOUR PRODUCT CODE:.....

CREATE YOUR OWN PRODUCT CODE WITH YOUR CHOSEN FEATURES

	FAMILY	SERIES	DIAMETER (except standard)	PRESSURE (specify only if 400 bar/5800 psi, 600 bar/8700 psi, 1000 bar/14500 psi)	MATERIAL (except standard AISI 304)	CONFIGURATION (specify the configuration code only when stated)	ACCESSORIES (only KIT BK and HD)	DESIGN	COLOR
CODE EXAMPLE									
WRITE YOUR OWN CODE

CODE EXAMPLE:

YOUR PRODUCT CODE:.....

AV EK 2095 380

with **REMOTE CONTROL**

ELECTRIC **380 VOLT**



*std: standard

MATERIALS	
AISI 304	Stainless steel
AISI 316	Stainless steel AISI 316
CA	Cataphoric treatment steel
FE	Powder coating steel

QUANTITY FOR PALLET	1
BOX DIMENSIONS	80 x 120 x 140h cm / 80 x 47 x 55h in
MAX PALLET DIMENSIONS	80 x 120 x 140h cm / 80 x 47 x 55h in
WEIGHT WITHOUT BOX	80 Kg / 176 Lb
WEIGHT WITH BOX	80 Kg / 176 Lb
MAX PALLET WEIGHT	98 Kg / 216 Lb

CONFIGURATION	DIAMETER	MAX PRESSURE (bar / psi)	MATERIAL	MAX TEMPERATURE (°C / °F)	MAX HOSE LENGTH (m / ft)	STANDARD CODE
WATER	1"½ (std*)	10 / 145	AISI 304 (std*) FE	100 / 212	60 / 197	AV EK 2095 380

AV EK 2096

with **REMOTE CONTROL**

ELECTRIC **12 VOLT**



*std: standard

MATERIALS	
AISI 304	Stainless steel
AISI 316	Stainless steel AISI 316
CA	Cataphoric treatment steel
FE	Powder coating steel

QUANTITY FOR PALLET	1
BOX DIMENSIONS	80 x 120 x 140h cm / 80 x 47 x 55h in
MAX PALLET DIMENSIONS	80 x 120 x 140h cm / 80 x 47 x 55h in
WEIGHT WITHOUT BOX	80 Kg / 176 Lb
WEIGHT WITH BOX	80 Kg / 176 Lb
MAX PALLET WEIGHT	98 Kg / 216 Lb

CONFIGURATION	DIAMETER	MAX PRESSURE (bar / psi)	MATERIAL	MAX TEMPERATURE (°C / °F)	MAX HOSE LENGTH (m / ft)	STANDARD CODE
WATER	1"½ (std*)	10 / 145	AISI 304 (std*) FE	100 / 212	35 / 115	AV EK 2096

AV EK 2095 S 380

without **REMOTE CONTROL**

ELECTRIC **380 VOLT**



*std: standard

MATERIALS	
AISI 304	Stainless steel
AISI 316	Stainless steel AISI 316
CA	Cataphoric treatment steel
FE	Powder coating steel

QUANTITY FOR PALLET	1
BOX DIMENSIONS	80 x 120 x 140h cm / 80 x 47 x 55h in
MAX PALLET DIMENSIONS	80 x 120 x 140h cm / 80 x 47 x 55h in
WEIGHT WITHOUT BOX	80 Kg / 176 Lb
WEIGHT WITH BOX	80 Kg / 176 Lb
MAX PALLET WEIGHT	98 Kg / 216 Lb

CONFIGURATION	DIAMETER	MAX PRESSURE (bar / psi)	MATERIAL	MAX TEMPERATURE (°C / °F)	MAX HOSE LENGTH (m / ft)	STANDARD CODE
WATER	1"½ (std*)	10 / 145	AISI 304 (std*) FE	100 / 212	60 / 197	AV EK 2095 S 380

AV EK 2096 S

without **REMOTE CONTROL**

ELECTRIC **12 VOLT**



*std: standard

MATERIALS	
AISI 304	Stainless steel
AISI 316	Stainless steel AISI 316
CA	Cataphoric treatment steel
FE	Powder coating steel

QUANTITY FOR PALLET	1
BOX DIMENSIONS	80 x 120 x 140h cm / 80 x 47 x 55h in
MAX PALLET DIMENSIONS	80 x 120 x 140h cm / 80 x 47 x 55h in
WEIGHT WITHOUT BOX	80 Kg / 176 Lb
WEIGHT WITH BOX	80 Kg / 176 Lb
MAX PALLET WEIGHT	98 Kg / 216 Lb

CONFIGURATION	DIAMETER	MAX PRESSURE (bar / psi)	MATERIAL	MAX TEMPERATURE (°C / °F)	MAX HOSE LENGTH (m / ft)	STANDARD CODE
WATER	1"½ (std*)	10 / 145	AISI 304 (std*) FE	100 / 212	35 / 115	AV EK 2096 S

CREATE YOUR OWN PRODUCT CODE WITH YOUR CHOSEN FEATURES

	FAMILY	SERIES	DIAMETER (except standard)	PRESSURE (specify only if 400 bar/5800 psi, 600 bar/8700 psi, 1000 bar/14500 psi)	MATERIAL (except standard AISI 304)	CONFIGURATION (specify the configuration code only when stated)	ACCESSORIES (only KIT BK and HD)	DESIGN	COLOR
CODE EXAMPLE									
WRITE YOUR OWN CODE

CODE EXAMPLE:

YOUR PRODUCT CODE:.....

CREATE YOUR OWN PRODUCT CODE WITH YOUR CHOSEN FEATURES

	FAMILY	SERIES	DIAMETER (except standard)	PRESSURE (specify only if 400 bar/5800 psi, 600 bar/8700 psi, 1000 bar/14500 psi)	MATERIAL (except standard AISI 304)	CONFIGURATION (specify the configuration code only when stated)	ACCESSORIES (only KIT BK and HD)	DESIGN	COLOR
CODE EXAMPLE									
WRITE YOUR OWN CODE

CODE EXAMPLE:

YOUR PRODUCT CODE:.....

AV EK 2096 24

with **REMOTE CONTROL**

ELECTRIC **24 VOLT**



*std: standard

MATERIALS	
AISI 304	Stainless steel
AISI 316	Stainless steel AISI 316
CA	Cataphoric treatment steel
FE	Powder coating steel

QUANTITY FOR PALLET	1
BOX DIMENSIONS	80 x 120 x 140h cm / 80 x 47 x 55h in
MAX PALLET DIMENSIONS	80 x 120 x 140h cm / 80 x 47 x 55h in
WEIGHT WITHOUT BOX	80 Kg / 176 Lb
WEIGHT WITH BOX	80 Kg / 176 Lb
MAX PALLET WEIGHT	98 Kg / 216 Lb

CONFIGURATION	DIAMETER	MAX PRESSURE (bar / psi)	MATERIAL	MAX TEMPERATURE (°C / °F)	MAX HOSE LENGTH (m / ft)	STANDARD CODE
WATER	1"½ (std*)	10 / 145	AISI 304 (std*) FE	100 / 212	35 / 115	AV EK 2096 24

AV EK 2096 230

with **REMOTE CONTROL**

ELECTRIC **230 VOLT**



*std: standard

MATERIALS	
AISI 304	Stainless steel
AISI 316	Stainless steel AISI 316
CA	Cataphoric treatment steel
FE	Powder coating steel

QUANTITY FOR PALLET	1
BOX DIMENSIONS	80 x 120 x 140h cm / 80 x 47 x 55h in
MAX PALLET DIMENSIONS	80 x 120 x 140h cm / 80 x 47 x 55h in
WEIGHT WITHOUT BOX	80 Kg / 176 Lb
WEIGHT WITH BOX	80 Kg / 176 Lb
MAX PALLET WEIGHT	98 Kg / 216 Lb

CONFIGURATION	DIAMETER	MAX PRESSURE (bar / psi)	MATERIAL	MAX TEMPERATURE (°C / °F)	MAX HOSE LENGTH (m / ft)	STANDARD CODE
WATER	1"½ (std*)	10 / 145	AISI 304 (std*) FE	100 / 212	35 / 115	AV EK 2096 230

AV EK 2096 S 24

without **REMOTE CONTROL**

ELECTRIC **24 VOLT**



*std: standard

MATERIALS	
AISI 304	Stainless steel
AISI 316	Stainless steel AISI 316
CA	Cataphoric treatment steel
FE	Powder coating steel

QUANTITY FOR PALLET	1
BOX DIMENSIONS	80 x 120 x 140h cm / 80 x 47 x 55h in
MAX PALLET DIMENSIONS	80 x 120 x 140h cm / 80 x 47 x 55h in
WEIGHT WITHOUT BOX	80 Kg / 176 Lb
WEIGHT WITH BOX	80 Kg / 176 Lb
MAX PALLET WEIGHT	98 Kg / 216 Lb

CONFIGURATION	DIAMETER	MAX PRESSURE (bar / psi)	MATERIAL	MAX TEMPERATURE (°C / °F)	MAX HOSE LENGTH (m / ft)	STANDARD CODE
WATER	1"½ (std*)	10 / 145	AISI 304 (std*) FE	100 / 212	35 / 115	AV EK 2096 S 24

AV EK 2096 S 230

without **REMOTE CONTROL**

ELECTRIC **230 VOLT**



*std: standard

MATERIALS	
AISI 304	Stainless steel
AISI 316	Stainless steel AISI 316
CA	Cataphoric treatment steel
FE	Powder coating steel

QUANTITY FOR PALLET	1
BOX DIMENSIONS	80 x 120 x 140h cm / 80 x 47 x 55h in
MAX PALLET DIMENSIONS	80 x 120 x 140h cm / 80 x 47 x 55h in
WEIGHT WITHOUT BOX	80 Kg / 176 Lb
WEIGHT WITH BOX	80 Kg / 176 Lb
MAX PALLET WEIGHT	98 Kg / 216 Lb

CONFIGURATION	DIAMETER	MAX PRESSURE (bar / psi)	MATERIAL	MAX TEMPERATURE (°C / °F)	MAX HOSE LENGTH (m / ft)	STANDARD CODE
WATER	1"½ (std*)	10 / 145	AISI 304 (std*) FE	100 / 212	35 / 115	AV EK 2096 S 230

CREATE YOUR OWN PRODUCT CODE WITH YOUR CHOSEN FEATURES

	FAMILY	SERIES	DIAMETER (except standard)	PRESSURE (specify only if 400 bar/5800 psi, 600 bar/8700 psi, 1000 bar/14500 psi)	MATERIAL (except standard AISI 304)	CONFIGURATION (specify the configuration code only when stated)	ACCESSORIES (only KIT BK and HD)	DESIGN	COLOR
CODE EXAMPLE									
WRITE YOUR OWN CODE

CODE EXAMPLE:

YOUR PRODUCT CODE:.....

CREATE YOUR OWN PRODUCT CODE WITH YOUR CHOSEN FEATURES

	FAMILY	SERIES	DIAMETER (except standard)	PRESSURE (specify only if 400 bar/5800 psi, 600 bar/8700 psi, 1000 bar/14500 psi)	MATERIAL (except standard AISI 304)	CONFIGURATION (specify the configuration code only when stated)	ACCESSORIES (only KIT BK and HD)	DESIGN	COLOR
CODE EXAMPLE									
WRITE YOUR OWN CODE

CODE EXAMPLE:

YOUR PRODUCT CODE:.....

AV EK 2096 380

with **REMOTE CONTROL**

ELECTRIC **380 VOLT**



*std: standard

MATERIALS	
AISI 304	Stainless steel
AISI 316	Stainless steel AISI 316
CA	Cataphoric treatment steel
FE	Powder coating steel

QUANTITY FOR PALLET	1
BOX DIMENSIONS	80 x 120 x 140h cm / 80 x 47 x 55h in
MAX PALLET DIMENSIONS	80 x 120 x 140h cm / 80 x 47 x 55h in
WEIGHT WITHOUT BOX	80 Kg / 176 Lb
WEIGHT WITH BOX	80 Kg / 176 Lb
MAX PALLET WEIGHT	98 Kg / 216 Lb

CONFIGURATION	DIAMETER	MAX PRESSURE (bar / psi)	MATERIAL	MAX TEMPERATURE (°C / °F)	MAX HOSE LENGTH (m / ft)	STANDARD CODE
WATER	1 1/2" (std*)	10 / 145	AISI 304 (std*) FE	100 / 212	35 / 115	AV EK 2096 380

AV EK 2090

with **REMOTE CONTROL**

ELECTRIC **12 VOLT**



*std: standard

MATERIALS	
AISI 304	Stainless steel
AISI 316	Stainless steel AISI 316
CA	Cataphoric treatment steel
FE	Powder coating steel

QUANTITY FOR PALLET	1
BOX DIMENSIONS	80 x 120 x 140h cm / 80 x 47 x 55h in
MAX PALLET DIMENSIONS	80 x 120 x 140h cm / 80 x 47 x 55h in
WEIGHT WITHOUT BOX	80 Kg / 176 Lb
WEIGHT WITH BOX	80 Kg / 176 Lb
MAX PALLET WEIGHT	98 Kg / 216 Lb

CONFIGURATION	DIAMETER	MAX PRESSURE (bar / psi)	MATERIAL	MAX TEMPERATURE (°C / °F)	MAX HOSE LENGTH (m / ft)	STANDARD CODE
WATER	2" (std*)	10 / 145	AISI 304 (std*) FE	100 / 212	25 / 82	AV EK 2090

AV EK 2096 S 380

without **REMOTE CONTROL**

ELECTRIC **380 VOLT**



*std: standard

MATERIALS	
AISI 304	Stainless steel
AISI 316	Stainless steel AISI 316
CA	Cataphoric treatment steel
FE	Powder coating steel

QUANTITY FOR PALLET	1
BOX DIMENSIONS	80 x 120 x 140h cm / 80 x 47 x 55h in
MAX PALLET DIMENSIONS	80 x 120 x 140h cm / 80 x 47 x 55h in
WEIGHT WITHOUT BOX	80 Kg / 176 Lb
WEIGHT WITH BOX	80 Kg / 176 Lb
MAX PALLET WEIGHT	98 Kg / 216 Lb

CONFIGURATION	DIAMETER	MAX PRESSURE (bar / psi)	MATERIAL	MAX TEMPERATURE (°C / °F)	MAX HOSE LENGTH (m / ft)	STANDARD CODE
WATER	1 1/2" (std*)	10 / 145	AISI 304 (std*) FE	100 / 212	35 / 115	AV EK 2096 S 380

AV EK 2090 S

without **REMOTE CONTROL**

ELECTRIC **12 VOLT**



*std: standard

MATERIALS	
AISI 304	Stainless steel
AISI 316	Stainless steel AISI 316
CA	Cataphoric treatment steel
FE	Powder coating steel

QUANTITY FOR PALLET	1
BOX DIMENSIONS	80 x 120 x 140h cm / 80 x 47 x 55h in
MAX PALLET DIMENSIONS	80 x 120 x 140h cm / 80 x 47 x 55h in
WEIGHT WITHOUT BOX	80 Kg / 176 Lb
WEIGHT WITH BOX	80 Kg / 176 Lb
MAX PALLET WEIGHT	98 Kg / 216 Lb

CONFIGURATION	DIAMETER	MAX PRESSURE (bar / psi)	MATERIAL	MAX TEMPERATURE (°C / °F)	MAX HOSE LENGTH (m / ft)	STANDARD CODE
WATER	2" (std*)	10 / 145	AISI 304 (std*) FE	100 / 212	25 / 82	AV EK 2090 S

CREATE YOUR OWN PRODUCT CODE WITH YOUR CHOSEN FEATURES

	FAMILY	SERIES	DIAMETER (except standard)	PRESSURE (specify only if 400 bar/5800 psi, 600 bar/8700 psi, 1000 bar/14500 psi)	MATERIAL (except standard AISI 304)	CONFIGURATION (specify the configuration code only when stated)	ACCESSORIES (only KIT BK and HD)	DESIGN	COLOR
CODE EXAMPLE									
WRITE YOUR OWN CODE

CODE EXAMPLE:

YOUR PRODUCT CODE:.....

CREATE YOUR OWN PRODUCT CODE WITH YOUR CHOSEN FEATURES

	FAMILY	SERIES	DIAMETER (except standard)	PRESSURE (specify only if 400 bar/5800 psi, 600 bar/8700 psi, 1000 bar/14500 psi)	MATERIAL (except standard AISI 304)	CONFIGURATION (specify the configuration code only when stated)	ACCESSORIES (only KIT BK and HD)	DESIGN	COLOR
CODE EXAMPLE									
WRITE YOUR OWN CODE

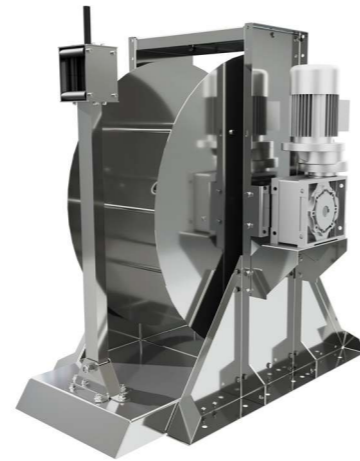
CODE EXAMPLE:

YOUR PRODUCT CODE:.....

AV EK 2090 24

with **REMOTE CONTROL**

E ELECTRIC **24** VOLT



*std: standard

MATERIALS	
AISI 304	Stainless steel
AISI 316	Stainless steel AISI 316
CA	Cataphoric treatment steel
FE	Powder coating steel

QUANTITY FOR PALLET	1
BOX DIMENSIONS	80 x 120 x 140h cm / 80 x 47 x 55h in
MAX PALLET DIMENSIONS	80 x 120 x 140h cm / 80 x 47 x 55h in
WEIGHT WITHOUT BOX	80 Kg / 176 Lb
WEIGHT WITH BOX	80 Kg / 176 Lb
MAX PALLET WEIGHT	98 Kg / 216 Lb

CONFIGURATION	DIAMETER	MAX PRESSURE (bar / psi)	MATERIAL	MAX TEMPERATURE (°C / °F)	MAX HOSE LENGTH (m / ft)	STANDARD CODE
WATER	2" (std*)	10 / 145	AISI 304 (std*) FE	100 / 212	25 / 82	AV EK 2090 24

AV EK 2090 230

with **REMOTE CONTROL**

E ELECTRIC **230** VOLT



*std: standard

MATERIALS	
AISI 304	Stainless steel
AISI 316	Stainless steel AISI 316
CA	Cataphoric treatment steel
FE	Powder coating steel

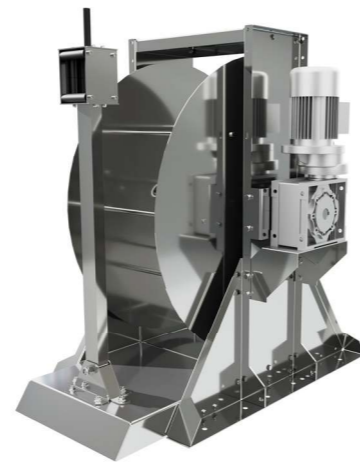
QUANTITY FOR PALLET	1
BOX DIMENSIONS	80 x 120 x 140h cm / 80 x 47 x 55h in
MAX PALLET DIMENSIONS	80 x 120 x 140h cm / 80 x 47 x 55h in
WEIGHT WITHOUT BOX	80 Kg / 176 Lb
WEIGHT WITH BOX	80 Kg / 176 Lb
MAX PALLET WEIGHT	98 Kg / 216 Lb

CONFIGURATION	DIAMETER	MAX PRESSURE (bar / psi)	MATERIAL	MAX TEMPERATURE (°C / °F)	MAX HOSE LENGTH (m / ft)	STANDARD CODE
WATER	2" (std*)	10 / 145	AISI 304 (std*) FE	100 / 212	25 / 82	AV EK 2090 230

AV EK 2090 S 24

without **REMOTE CONTROL**

E ELECTRIC **24** VOLT



*std: standard

MATERIALS	
AISI 304	Stainless steel
AISI 316	Stainless steel AISI 316
CA	Cataphoric treatment steel
FE	Powder coating steel

QUANTITY FOR PALLET	1
BOX DIMENSIONS	80 x 120 x 140h cm / 80 x 47 x 55h in
MAX PALLET DIMENSIONS	80 x 120 x 140h cm / 80 x 47 x 55h in
WEIGHT WITHOUT BOX	80 Kg / 176 Lb
WEIGHT WITH BOX	80 Kg / 176 Lb
MAX PALLET WEIGHT	98 Kg / 216 Lb

CONFIGURATION	DIAMETER	MAX PRESSURE (bar / psi)	MATERIAL	MAX TEMPERATURE (°C / °F)	MAX HOSE LENGTH (m / ft)	STANDARD CODE
WATER	2" (std*)	10 / 145	AISI 304 (std*) FE	100 / 212	25 / 82	AV EK 2090 S 24

AV EK 2090 S 230

without **REMOTE CONTROL**

E ELECTRIC **230** VOLT



*std: standard

MATERIALS	
AISI 304	Stainless steel
AISI 316	Stainless steel AISI 316
CA	Cataphoric treatment steel
FE	Powder coating steel

QUANTITY FOR PALLET	1
BOX DIMENSIONS	80 x 120 x 140h cm / 80 x 47 x 55h in
MAX PALLET DIMENSIONS	80 x 120 x 140h cm / 80 x 47 x 55h in
WEIGHT WITHOUT BOX	80 Kg / 176 Lb
WEIGHT WITH BOX	80 Kg / 176 Lb
MAX PALLET WEIGHT	98 Kg / 216 Lb

CONFIGURATION	DIAMETER	MAX PRESSURE (bar / psi)	MATERIAL	MAX TEMPERATURE (°C / °F)	MAX HOSE LENGTH (m / ft)	STANDARD CODE
WATER	2" (std*)	10 / 145	AISI 304 (std*) FE	100 / 212	25 / 82	AV EK 2090 S 230

CREATE YOUR OWN PRODUCT CODE WITH YOUR CHOSEN FEATURES

	FAMILY	SERIES	DIAMETER (except standard)	PRESSURE (specify only if 400 bar/5800 psi, 600 bar/8700 psi, 1000 bar/14500 psi)	MATERIAL (except standard AISI 304)	CONFIGURATION (specify the configuration code only when stated)	ACCESSORIES (only KIT BK and HD)	DESIGN	COLOR
CODE EXAMPLE									
WRITE YOUR OWN CODE

CODE EXAMPLE:

YOUR PRODUCT CODE:.....

CREATE YOUR OWN PRODUCT CODE WITH YOUR CHOSEN FEATURES

	FAMILY	SERIES	DIAMETER (except standard)	PRESSURE (specify only if 400 bar/5800 psi, 600 bar/8700 psi, 1000 bar/14500 psi)	MATERIAL (except standard AISI 304)	CONFIGURATION (specify the configuration code only when stated)	ACCESSORIES (only KIT BK and HD)	DESIGN	COLOR
CODE EXAMPLE									
WRITE YOUR OWN CODE

CODE EXAMPLE:

YOUR PRODUCT CODE:.....

AV EK 2090 380

with **REMOTE CONTROL**

ELECTRIC **380 VOLT**



*std: standard

MATERIALS	
AISI 304	Stainless steel
AISI 316	Stainless steel AISI 316
CA	Cataphoric treatment steel
FE	Powder coating steel

QUANTITY FOR PALLET		1
BOX DIMENSIONS	80 x 120 x 140h cm / 80 x 47 x 55h in	
MAX PALLET DIMENSIONS	80 x 120 x 140h cm / 80 x 47 x 55h in	
WEIGHT WITHOUT BOX	80 Kg / 176 Lb	
WEIGHT WITH BOX	80 Kg / 176 Lb	
MAX PALLET WEIGHT	98 Kg / 216 Lb	

CONFIGURATION	DIAMETER	MAX PRESSURE (bar / psi)	MATERIAL	MAX TEMPERATURE (°C / °F)	MAX HOSE LENGTH (m / ft)	STANDARD CODE
WATER	2" (std*)	10 / 145	AISI 304 (std*) FE	100 / 212	25 / 82	AV EK 2090 380

AV PN 9811

PNEUMATIC Control and filtration system NOT INCLUDED



*std: standard

MATERIALS	
AISI 304	Stainless steel
AISI 316	Stainless steel AISI 316
CA	Cataphoric treatment steel
FE	Powder coating steel

QUANTITY FOR PALLET		12
BOX DIMENSIONS	45 x 55 x 60h cm / 18 x 22 x 24h in	
MAX PALLET DIMENSIONS	100 x 120 x 195h cm / 39 x 47 x 77h in	
WEIGHT WITHOUT BOX	18 Kg / 40 Lb	
WEIGHT WITH BOX	20 Kg / 44 Lb	
MAX PALLET WEIGHT	258 Kg / 569 Lb	

CONFIGURATION	DIAMETER	MAX PRESSURE (bar / psi)	MATERIAL	MAX TEMPERATURE (°C / °F)	MAX HOSE LENGTH (m / ft)	STANDARD CODE
WATER	1/4"	0-250 / 0-3626	AISI 304 (std*) 316 FE CA	140 / 284 discontinuous use	45 / 148	AV PN 9811
	5/16"				40 / 131	
	3/8"				35 / 115	
	1/2" (std*)				30 / 98	

AV EK 2090 S 380

without **REMOTE CONTROL**

ELECTRIC **380 VOLT**



*std: standard

MATERIALS	
AISI 304	Stainless steel
AISI 316	Stainless steel AISI 316
CA	Cataphoric treatment steel
FE	Powder coating steel

QUANTITY FOR PALLET		1
BOX DIMENSIONS	80 x 120 x 140h cm / 80 x 47 x 55h in	
MAX PALLET DIMENSIONS	80 x 120 x 140h cm / 80 x 47 x 55h in	
WEIGHT WITHOUT BOX	80 Kg / 176 Lb	
WEIGHT WITH BOX	80 Kg / 176 Lb	
MAX PALLET WEIGHT	98 Kg / 216 Lb	

CONFIGURATION	DIAMETER	MAX PRESSURE (bar / psi)	MATERIAL	MAX TEMPERATURE (°C / °F)	MAX HOSE LENGTH (m / ft)	STANDARD CODE
WATER	2" (std*)	10 / 145	AISI 304 (std*) FE	100 / 212	25 / 82	AV EK 2090 S 380

AV PN 8000

PNEUMATIC Control and filtration system NOT INCLUDED



*std: standard

MATERIALS	
AISI 304	Stainless steel
AISI 316	Stainless steel AISI 316
CA	Cataphoric treatment steel
FE	Powder coating steel

QUANTITY FOR PALLET		4
BOX DIMENSIONS	60 x 80 x 70h cm / 24 x 31 x 27h in	
MAX PALLET DIMENSIONS	60 x 120 x 160h cm / 24 x 47 x 63h in	
WEIGHT WITHOUT BOX	46 Kg / 101 Lb	
WEIGHT WITH BOX	48 Kg / 106 Lb	
MAX PALLET WEIGHT	210 Kg / 463 Kg	

CONFIGURATION	DIAMETER	MAX PRESSURE (bar / psi)	MATERIAL	MAX TEMPERATURE (°C / °F)	MAX HOSE LENGTH (m / ft)	STANDARD CODE
WATER	1/4"	0-250 / 0-3626	AISI 304 (std*) FE	140 / 284 discontinuous use	240 / 787	AV PN 8000
	5/16"				180 / 590	
	3/8"				150 / 492	
	1/2" (std*)				120 / 394	

CREATE YOUR OWN PRODUCT CODE WITH YOUR CHOSEN FEATURES

	FAMILY	SERIES	DIAMETER (except standard)	PRESSURE (specify only if 400 bar/5800 psi, 600 bar/8700 psi, 1000 bar/14500 psi)	MATERIAL (except standard AISI 304)	CONFIGURATION (specify the configuration code only when stated)	ACCESSORIES (only KIT BK and HD)	DESIGN	COLOR
CODE EXAMPLE									
WRITE YOUR OWN CODE									

CODE EXAMPLE:

YOUR PRODUCT CODE:

CREATE YOUR OWN PRODUCT CODE WITH YOUR CHOSEN FEATURES

	FAMILY	SERIES	DIAMETER (except standard)	PRESSURE (specify only if 400 bar/5800 psi, 600 bar/8700 psi, 1000 bar/14500 psi)	MATERIAL (except standard AISI 304)	CONFIGURATION (specify the configuration code only when stated)	ACCESSORIES (only KIT BK and HD)	DESIGN	COLOR
CODE EXAMPLE	AV	PN 9811							
WRITE YOUR OWN CODE									

CODE EXAMPLE: AV PN 9811

YOUR PRODUCT CODE:

HR PN 0



*std: standard

MATERIALS	
AISI 304	Stainless steel
AISI 316	Stainless steel AISI 316
CA	Cataphoric treatment steel
FE	Powder coating steel

QUANTITY FOR PALLET	4
BOX DIMENSIONS	60 x 80 x 70h cm / 24 x 31 x 27h in
MAX PALLET DIMENSIONS	60 x 120 x 160h cm / 24 x 47 x 63h in
WEIGHT WITHOUT BOX	38 Kg / 84 Lb
WEIGHT WITH BOX	40 Kg / 88 Lb
MAX PALLET WEIGHT	178 Kg / 392 Lb

CONFIGURATION	DIAMETER	MAX PRESSURE (bar / psi)	MATERIAL	MAX TEMPERATURE (°C / °F)	MAX HOSE LENGTH (m / ft)	STANDARD CODE
WATER	1/4"	0-250 / 0-3626	AISI 304 (std*) FE	140 / 284 discontinuous use	200 / 656	HR PN 0
	5/16"				170 / 558	
	3/8"				120 / 394	
	1/2" (std*)				100 / 328	

AV PN 8001



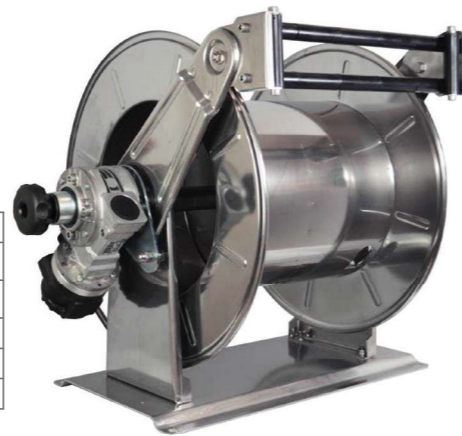
*std: standard

MATERIALS	
AISI 304	Stainless steel
AISI 316	Stainless steel AISI 316
CA	Cataphoric treatment steel
FE	Powder coating steel

QUANTITY FOR PALLET	4
BOX DIMENSIONS	60 x 80 x 70h cm / 24 x 31 x 27h in
MAX PALLET DIMENSIONS	60 x 120 x 160h cm / 24 x 47 x 63h in
WEIGHT WITHOUT BOX	46 Kg / 101 Lb
WEIGHT WITH BOX	48 Kg / 106 Lb
MAX PALLET WEIGHT	210 Kg / 463 Kg

CONFIGURATION	DIAMETER	MAX PRESSURE (bar / psi)	MATERIAL	MAX TEMPERATURE (°C / °F)	MAX HOSE LENGTH (m / ft)	STANDARD CODE
WATER	3/4" (std*)	0-100 / 0-1450	AISI 304 (std*) FE	100 / 212	60 / 197	AV PN 8001
	1"				40 / 131	

HR PN 2



*std: standard

MATERIALS	
AISI 304	Stainless steel
AISI 316	Stainless steel AISI 316
CA	Cataphoric treatment steel
FE	Powder coating steel

QUANTITY FOR PALLET	4
BOX DIMENSIONS	60 x 80 x 70h cm / 24 x 31 x 27h in
MAX PALLET DIMENSIONS	60 x 120 x 160h cm / 24 x 47 x 63h in
WEIGHT WITHOUT BOX	38 Kg / 84 Lb
WEIGHT WITH BOX	40 Kg / 88 Lb
MAX PALLET WEIGHT	178 Kg / 392 Lb

CONFIGURATION	DIAMETER	MAX PRESSURE (bar / psi)	MATERIAL	MAX TEMPERATURE (°C / °F)	MAX HOSE LENGTH (m / ft)	STANDARD CODE
WATER	3/4" (std*)	0-100 / 0-1450	AISI 304 (std*) FE	100 / 212	50 / 164	HR PN 2
	1"				35 / 115	

CREATE YOUR OWN PRODUCT CODE WITH YOUR CHOSEN FEATURES

	FAMILY	SERIES	DIAMETER (except standard)	PRESSURE (specify only if 400 bar/5800 psi, 600 bar/8700 psi, 1000 bar/14500 psi)	MATERIAL (except standard AISI 304)	CONFIGURATION (specify the configuration code only when stated)	ACCESSORIES (only KIT BK and HD)	DESIGN	COLOR
CODE EXAMPLE	HR	PN 0			FE			/	
WRITE YOUR OWN CODE	/

CODE EXAMPLE: HR PN 0 FE

YOUR PRODUCT CODE:

CREATE YOUR OWN PRODUCT CODE WITH YOUR CHOSEN FEATURES

	FAMILY	SERIES	DIAMETER (except standard)	PRESSURE (specify only if 400 bar/5800 psi, 600 bar/8700 psi, 1000 bar/14500 psi)	MATERIAL (except standard AISI 304)	CONFIGURATION (specify the configuration code only when stated)	ACCESSORIES (only KIT BK and HD)	DESIGN	COLOR
CODE EXAMPLE	AV	PN 8001			FE			/	
WRITE YOUR OWN CODE	/

CODE EXAMPLE: AV PN 8001 FE

YOUR PRODUCT CODE: