

AV 100



*std: standard

MATERIALS	
AISI 304	Stainless steel
AISI 316	Stainless steel AISI 316
CA	Cataphoric treatment steel
FE	Powder coating steel

QUANTITY FOR PALLET	288
BOX DIMENSIONS	25 x 25 x 10h cm / 10 x 10 x 4h in
MAX PALLET DIMENSIONS	80 x 120 x 210h cm / 31 x 47 x 82h in
WEIGHT WITHOUT BOX	2 Kg / 4 Lb
WEIGHT WITH BOX	2 Kg / 4 Lb
MAX PALLET WEIGHT	594 Kg / 1309 Lb



CONFIGURATION	DIAMETER	MAX PRESSURE (bar / psi)	MATERIAL	MAX TEMPERATURE (°C / °F)	MAX HOSE LENGTH (m / ft)	STANDARD CODE
WATER	1/8" (std*)	10 / 145	AISI 304 (std*)	100 / 212	1,5 / 5	AV 100
COMPRESSED AIR	1/8" (std*)	10 / 145	AISI 304 (std*) 316 CA FE	90 / 194	1,5 / 5	AV 100

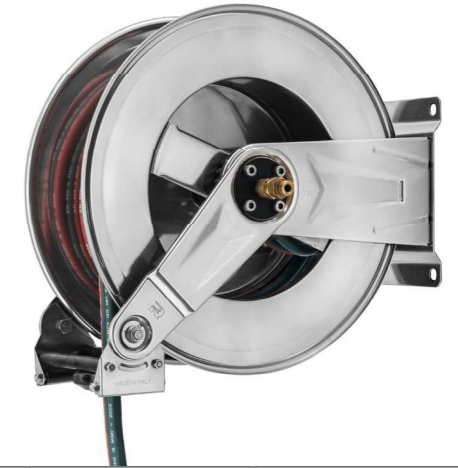
HR 1111 WE



*std: standard

MATERIALS	
AISI 304	Stainless steel
AISI 316	Stainless steel AISI 316
CA	Cataphoric treatment steel
FE	Powder coating steel

QUANTITY FOR PALLET	20
BOX DIMENSIONS	31 x 52 x 54h cm / 12 x 20 x 21h in
MAX PALLET DIMENSIONS	100 x 120 x 210h cm / 39 x 47 x 83h in
WEIGHT WITHOUT BOX	19 Kg / 42 Lb
WEIGHT WITH BOX	21 Kg / 46 Lb
MAX PALLET WEIGHT	438 Kg / 966 Lb



CONFIGURATION	DIAMETER	MAX PRESSURE (bar / psi)	MATERIAL	MAX TEMPERATURE (°C / °F)	MAX HOSE LENGTH (m / ft)	STANDARD CODE
MULTIFLOW	5/16" (std*)	Depending on fluid	AISI 304 (std*) FE	Depending on fluid	20 / 66	HR 1111 WE
OXYACETYLENE (WE)	5/16" (std*)	20 / 290	AISI 304 (std*) FE	Room temperature	20 / 66	HR 1111 WE

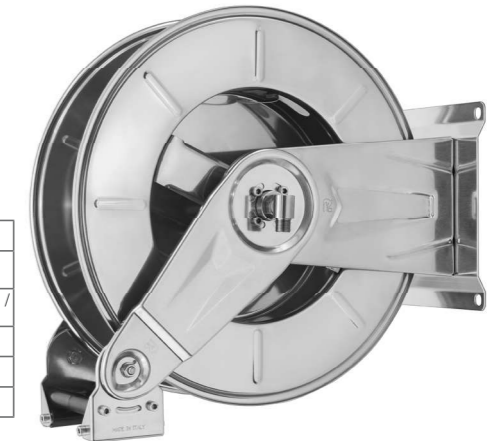
HR 3511 WE



*std: standard

MATERIALS	
AISI 304	Stainless steel
AISI 316	Stainless steel AISI 316
CA	Cataphoric treatment steel
FE	Powder coating steel

QUANTITY FOR PALLET	18
BOX DIMENSIONS	34 x 61 x 66h cm / 13 x 24 x 26h in
MAX PALLET DIMENSIONS	100 x 120 x 210h cm / 39 x 47 x 83h in
WEIGHT WITHOUT BOX	26 Kg / 57 Lb
WEIGHT WITH BOX	28 Kg / 62 Lb
MAX PALLET WEIGHT	522 Kg / 1151 Lb



CONFIGURATION	DIAMETER	MAX PRESSURE (bar / psi)	MATERIAL	MAX TEMPERATURE (°C / °F)	MAX HOSE LENGTH (m / ft)	STANDARD CODE
MULTIFLOW	5/16" (std*)	Depending on fluid	AISI 304 (std*) FE	Depending on fluid	35 / 115	HR 3511 WE
OXYACETYLENE (WE)	5/16" (std*)	20 / 290	AISI 304 (std*) FE	Room temperature	35 / 115	HR 3511 WE

CREATE YOUR OWN PRODUCT CODE WITH YOUR CHOSEN FEATURES

	FAMILY	SERIES	DIAMETER (except standard)	PRESSURE (specify only if 400 bar/5800 psi, 600 bar/8700 psi, 1000 bar/14500 psi)	MATERIAL (except standard AISI 304)	CONFIGURATION (specify the configuration code only when stated)	ACCESSORIES (only KIT BK and HD)	DESIGN	COLOR
CODE EXAMPLE	AV	100							
WRITE YOUR OWN CODE

CODE EXAMPLE: AV 100

YOUR PRODUCT CODE:

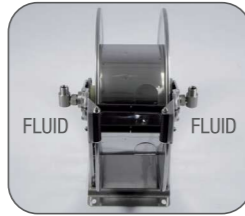
CREATE YOUR OWN PRODUCT CODE WITH YOUR CHOSEN FEATURES

	FAMILY	SERIES	DIAMETER (except standard)	PRESSURE (specify only if 400 bar/5800 psi, 600 bar/8700 psi, 1000 bar/14500 psi)	MATERIAL (except standard AISI 304)	CONFIGURATION (specify the configuration code only when stated)	ACCESSORIES (only KIT BK and HD)	DESIGN	COLOR
CODE EXAMPLE	HR	3511			FE	WE			
WRITE YOUR OWN CODE

CODE EXAMPLE: HR 3511 FE WE

YOUR PRODUCT CODE:

HR1120 HAI



*std: standard

MATERIALS	
AISI 304	Stainless steel
AISI 316	Stainless steel AISI 316
CA	Cataphoric treatment steel
FE	Powder coating steel

QUANTITY FOR PALLET	20
BOX DIMENSIONS	31 x 52 x 54h cm / 12 x 20 x 21h in
MAX PALLET DIMENSIONS	100 x 120 x 210h cm / 39 x 47 x 83h in
WEIGHT WITHOUT BOX	19 Kg / 42 Lb
WEIGHT WITH BOX	21 Kg / 46 Lb
MAX PALLET WEIGHT	438 Kg / 966 Lb

CONFIGURATION	DIAMETER	MAX PRESSURE (bar / psi)	MATERIAL	MAX TEMPERATURE (°C / °F)	MAX HOSE LENGTH (m / ft)	STANDARD CODE
MULTIFLOW	1/2" (std*)	Depending on fluid	AISI 304 (std*) 316 CA FE	Depending on fluid	10 / 33	HR1120 HAI

Specify your fluids at the order stage

HR 1121



*std: standard

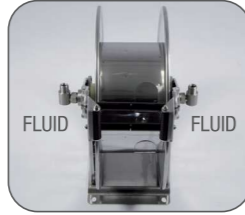
MATERIALS	
AISI 304	Stainless steel
AISI 316	Stainless steel AISI 316
CA	Cataphoric treatment steel
FE	Powder coating steel

QUANTITY FOR PALLET	20
BOX DIMENSIONS	31 x 52 x 54h cm / 12 x 20 x 21h in
MAX PALLET DIMENSIONS	100 x 120 x 210h cm / 39 x 47 x 83h in
WEIGHT WITHOUT BOX	19 Kg / 42 Lb
WEIGHT WITH BOX	21 Kg / 46 Lb
MAX PALLET WEIGHT	438 Kg / 966 Lb

CONFIGURATION	DIAMETER	MAX PRESSURE (bar / psi)	MATERIAL	MAX TEMPERATURE (°C / °F)	MAX HOSE LENGTH (m / ft)	STANDARD CODE
MULTIFLOW	1/2" (std*)	Depending on fluid	AISI 304 (std*) 316 CA FE	Depending on fluid	20 / 66	HR 1121

Specify your fluids at the order stage

HR3520 HAI



*std: standard

MATERIALS	
AISI 304	Stainless steel
AISI 316	Stainless steel AISI 316
CA	Cataphoric treatment steel
FE	Powder coating steel

QUANTITY FOR PALLET	15
BOX DIMENSIONS	40 x 60 x 63h cm / 16 x 24 x 25h in
MAX PALLET DIMENSIONS	100 x 120 x 105h cm / 39 x 47 x 41 in
WEIGHT WITHOUT BOX	26 Kg / 57 Lb
WEIGHT WITH BOX	28 Kg / 62 Lb
MAX PALLET WEIGHT	438 Kg / 966 Lb

CONFIGURATION	DIAMETER	MAX PRESSURE (bar / psi)	MATERIAL	MAX TEMPERATURE (°C / °F)	MAX HOSE LENGTH (m / ft)	STANDARD CODE
MULTIFLOW	1/2" (std*)	Depending on fluid	AISI 304 (std*) FE	Depending on fluid	15 / 49	HR3520 HAI

Specify your fluids at the order stage

CREATE YOUR OWN PRODUCT CODE WITH YOUR CHOSEN FEATURES

	FAMILY	SERIES	DIAMETER (except standard)	PRESSURE (specify only if 400 bar/5800 psi, 600 bar/8700 psi, 1000 bar/14500 psi)	MATERIAL (except standard AISI 304)	CONFIGURATION (specify the configuration code only when stated)	ACCESSORIES (only KIT BK and HD)	DESIGN	COLOR
CODE EXAMPLE	HR	3520						HAI	
WRITE YOUR OWN CODE

CODE EXAMPLE: HR 3520

YOUR PRODUCT CODE:

CREATE YOUR OWN PRODUCT CODE WITH YOUR CHOSEN FEATURES

	FAMILY	SERIES	DIAMETER (except standard)	PRESSURE (specify only if 400 bar/5800 psi, 600 bar/8700 psi, 1000 bar/14500 psi)	MATERIAL (except standard AISI 304)	CONFIGURATION (specify the configuration code only when stated)	ACCESSORIES (only KIT BK and HD)	DESIGN	COLOR
CODE EXAMPLE	HR	1121			CA				
WRITE YOUR OWN CODE

CODE EXAMPLE: HR 1121 CA

YOUR PRODUCT CODE: